



BOLLETTINO AGROMETEOROLOGICO

Ottobre 2020



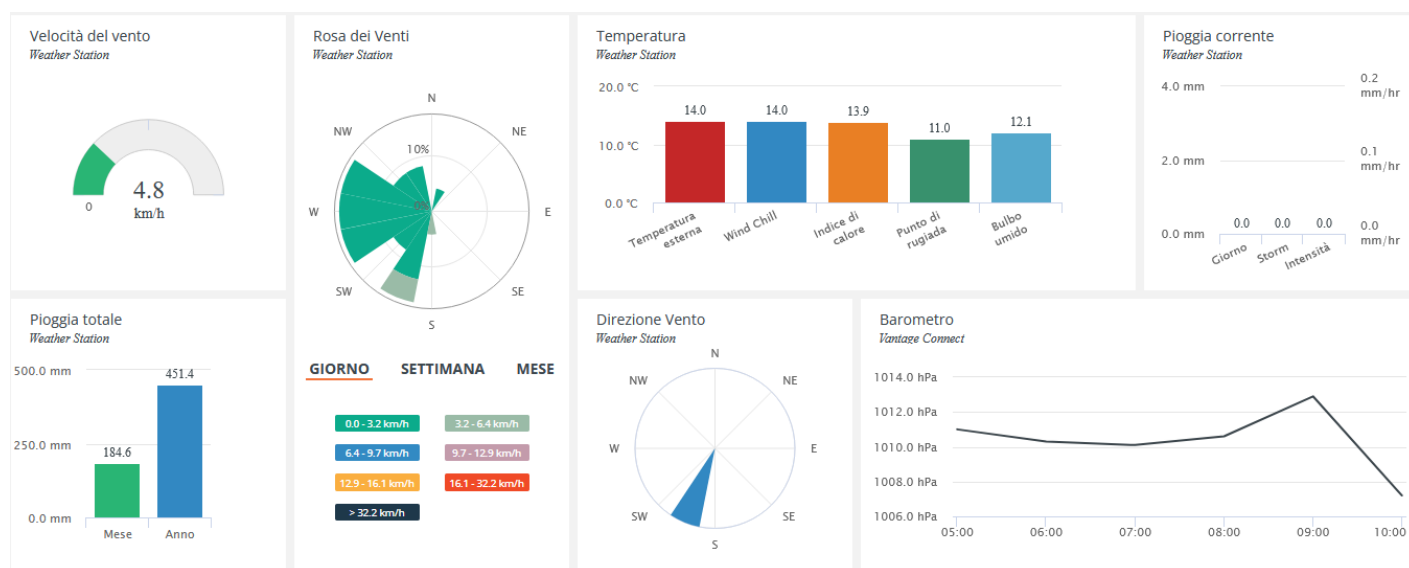
Fondo europeo agricolo per lo sviluppo rurale:
l'Europa investe nelle zone rurali





I bollettini Agrometeorologici vengono pubblicati con cadenza mensile sulla base delle informazioni raccolte in relazione a tre stazioni meteo installate nei pressi di Francavilla al Mare (CH), Vasto (CH) e Spaccarelli (CH).

Per avere accesso ai dati in tempo reale scrivici a questo indirizzo: info@poloagire.it



OCTOBER 2020

LOCAL CLIMATOLOGICAL DATA

DAVIS INSTRUMENTS, WEATHERLINK NETWORK

Francavilla al Mare, Abruzzo ITA

Francavilla Galasso

Lat: 42.4270 Long: 14.2602 Elev (ground): 54 meters Time Zone: Europe/Rome



TEMPERATURE °C						DEG DAYS BASE 18.3°		PRECIP. (mm)	PRESSURE (hPa)		WIND SPEED = km/h DIR = DEGREES							
Date	MAXIMUM	MINIMUM	AVERAGE	AVERAGE DEW PT	AVERAGE WET BULB	HEATING	COOLING	WATER EQUIV	AVERAGE STATION	AVERAGE SEA LEVEL	RESULTANT SPEED	RES DIR	AVERAGE SPEED	WIND MAX				Date
														INSTANT		ARCHIVE		
														SPEED	DIR	SPEED	DIR	
01	22.4	12.4	17.6	14.0	15.1	1.975	1.238	0.0	1004.3	1005.0	2.7	184	3.2	20.9	135	8.0	158	01
02	24.7	12.2	18.6	14.2	15.5	1.597	1.856	0.0	999.5	1000.2	2.2	195	1.6	19.3	158	6.4	158	02
03	30.9	16.0	22.8	15.5	17.4	0.215	4.683	0.0	995.6	996.4	1.3	238	1.6	24.1	225	6.4	22	03
04	27.1	16.5	20.9	10.5	13.5	0.113	2.692	0.0	1003.3	1004.0	1.9	264	3.2	33.8	360	11.3	338	04
05	23.1	16.7	20.3	12.5	14.8	0.106	2.081	0.0	1005.1	1005.8	1.3	147	3.2	25.7	112	8.0	112	05
06	21.8	13.1	17.9	11.0	13.3	1.354	0.905	0.0	1010.2	1010.9	1.6	172	1.6	22.5	158	8.0	158	06
07	21.1	13.9	17.9	12.7	14.4	1.220	0.829	20.8	1006.9	1007.6	2.2	305	3.2	45.1	45	8.0	22	07
08	21.2	11.8	16.3	11.0	12.8	2.634	0.623	0.0	1016.2	1017.0	3.7	352	4.8	19.3	90	6.4	338	08
09	21.3	10.3	15.1	10.2	11.9	3.801	0.595	0.0	1016.9	1017.6	1.2	206	1.6	12.9	90	3.2	248	09
10	20.7	10.7	16.0	11.6	13.1	2.912	0.537	0.0	1013.0	1013.7	2.3	191	1.6	14.5	158	4.8	225	10
11	22.1	11.2	16.9	12.1	13.6	1.998	0.528	0.0	1005.6	1006.3	1.1	280	1.6	24.1	338	9.7	338	11
12	16.8	11.7	13.7	11.8	12.5	4.634	0.000	21.0	1002.9	1003.6	4.6	353	3.2	25.7	45	8.0	22	12
13	17.3	8.1	12.9	8.6	10.2	5.449	0.000	0.0	1004.1	1004.8	3.0	347	3.2	20.9	360	8.0	338	13
14	20.7	7.0	14.9	9.5	11.4	3.625	0.167	0.0	1004.3	1005.0	1.7	182	1.6	19.3	135	8.0	158	14
15	22.2	13.7	16.5	10.4	12.4	2.366	0.498	3.8	1000.3	1001.1	2.1	298	1.6	24.1	338	8.0	338	15
16	19.9	10.9	15.3	8.7	11.0	3.032	0.039	0.0	1006.0	1006.7	1.1	298	1.6	29.0	22	4.8	248	16
17	17.0	8.0	12.4	9.3	10.4	5.896	0.000	0.0	1010.1	1010.9	0.9	206	1.6	14.5	68	3.2	248	17
18	17.7	7.4	12.2	9.6	10.6	6.132	0.000	0.0	1014.7	1015.4	1.9	196	1.6	14.5	158	4.8	135	18
19	17.8	7.8	12.8	10.1	11.1	5.569	0.000	0.0	1018.5	1019.2	2.2	191	3.2	16.1	112	6.4	135	19
20	18.0	7.7	12.7	10.4	11.2	5.678	0.000	0.0	1019.7	1020.5	2.7	196	3.2	17.7	158	6.4	158	20
21	17.8	7.2	12.5	9.7	10.8	5.787	0.000	0.0	1019.1	1019.8	2.0	188	1.6	12.9	135	4.8	135	21
22	17.9	8.5	12.9	10.7	11.5	5.407	0.000	0.0	1019.2	1020.0	1.7	191	1.6	12.9	158	4.8	135	22
23	19.3	8.4	13.9	11.4	12.3	4.525	0.081	0.0	1016.4	1017.1	1.9	196	1.6	12.9	158	4.8	135	23
24	18.7	12.2	14.3	13.0	13.5	3.998	0.000	2.2	1011.6	1012.4	0.5	280	1.6	22.5	22	4.8	45	24
25	19.3	10.9	14.9	11.8	12.9	3.477	0.042	0.0	1010.2	1010.9	0.9	187	1.6	19.3	158	4.8	112	25
26	21.4	9.8	16.2	10.6	12.5	2.523	0.440	0.0	1005.9	1006.6	2.4	202	1.6	19.3	158	6.4	158	26
27	18.9	12.6	16.5	11.2	13.0	1.898	0.051	0.0	1004.5	1005.2	0.3	73	1.6	19.3	90	6.4	90	27
28	18.1	9.6	13.7	10.4	11.6	4.634	0.000	0.0	1011.4	1012.1	1.6	5	3.2	19.3	315	6.4	338	28
29	17.4	6.8	12.1	9.2	10.3	6.257	0.000	0.0	1014.0	1014.7	1.7	209	1.6	11.3	248	4.8	225	29
30	18.5	8.4	12.7	10.2	11.1	5.618	0.000	0.0	1018.2	1018.9	2.1	200	1.6	12.9	135	4.8	135	30
31	17.8	8.0	12.8	11.3	11.8	5.551	0.000	0.0	1017.9	1018.6	1.0	195	1.6	11.3	90	3.2	225	31
	20.3	10.6	15.4	11.1	12.5	6.386	1.788		1009.9	1010.6	1.9	216.95	2.2	< Monthly Avg				
NUMBER OF DAYS WITH: >		Maximum Temp ≥ 32.2: 0		Minimum Temp ≤ 0: 0		Precipitation ≥ 0.2 mm: 4		Greatest 24 - hr precipitation: 21.0 Date: 11-12										
		Maximum Temp ≤ 0: 0		Minimum Temp ≤ -17.7: 0		Precipitation ≥ 2.0 mm: 3		Monthly Total Precipitation: 47.8										
SEA LEVEL PRESSURE: >		MAXIMUM: 1021.5		DATE: 20		TIME: 12:00		MONTHLY TOTAL		SEASON TO DATE TOTAL								
		MINIMUM: 994.2		3		17:00		DEGREEE DAYS: >		HEATING: 197.971		2290.125						
										COOLING: 32.192		0.104						

OCTOBER 2020
Francavilla al Mare, Abruzzo ITA

OCTOBER 2020

LOCAL CLIMATOLOGICAL DATA

DAVIS INSTRUMENTS, WEATHERLINK NETWORK

, Abruzzo ITA

Lanciano Eredi Legonziano



Lat: 42.2266 Long: 14.3454 Elev (ground): 237 meters Time Zone: Europe/Rome

TEMPERATURE °C						DEG DAYS BASE 18.3°		PRECIP. (mm)	PRESSURE (hPa)		WIND SPEED = km/h DIR = DEGREES						Date	
Date	MAXIMUM	MINIMUM	AVERAGE	AVERAGE DEW PT	AVERAGE WET BULB	HEATING	COOLING	WATER EQUIV	AVERAGE STATION	AVERAGE SEA LEVEL	RESULTANT SPEED	RES DIR	AVERAGE SPEED	WIND MAX				
														INSTANT		ARCHIVE		
														SPEED	DIR	SPEED		DIR
01	24.5	12.9	17.5	13.0	14.4	2.220	1.419	0.0	984.8	985.5	1.0	140	0.0	16.1	112	3.2	112	01
02	25.9	13.5	19.2	12.2	14.2	1.403	2.241	0.0	980.3	981.0	1.5	156	1.6	27.4	180	6.4	158	02
03	28.9	16.3	23.2	14.8	17.0	0.282	5.120	0.0	976.9	977.6	5.9	173	4.8	38.6	158	12.9	180	03
04	26.2	12.9	19.5	10.1	12.8	1.109	2.285	0.0	983.5	984.2	0.8	142	1.6	29.0	248	4.8	270	04
05	24.9	12.4	17.5	12.2	13.9	2.100	1.229	0.0	985.6	986.3	0.5	121	0.0	14.5	45	3.2	22	05
06	22.7	11.1	16.5	11.4	13.1	2.801	0.986	0.0	990.7	991.4	2.1	153	1.6	17.7	112	4.8	135	06
07	19.9	13.4	16.0	12.0	13.4	2.435	0.060	9.0	987.6	988.3	0.1	147	1.6	17.7	22	4.8	22	07
08	21.2	10.2	15.7	9.7	11.7	3.137	0.461	0.0	996.3	997.0	1.5	0	1.6	16.1	22	4.8	22	08
09	23.2	9.4	15.7	7.8	10.4	3.676	1.014	0.0	997.1	997.8	0.3	118	0.0	11.3	158	3.2	45	09
10	23.8	12.4	16.6	9.9	12.1	2.970	1.241	0.0	993.4	994.1	0.5	94	0.0	12.9	68	3.2	22	10
11	21.6	10.8	15.3	11.6	12.9	3.340	0.301	0.2	986.2	986.9	0.7	152	0.0	14.5	360	1.6	180	11
12	15.2	10.7	12.8	11.3	11.9	5.500	0.000	9.4	983.2	983.9	1.1	5	0.0	12.9	22	3.2	22	12
13	15.3	8.1	11.5	7.8	9.3	6.866	0.000	0.6	984.3	985.0	0.7	346	0.0	12.9	22	3.2	338	13
14	20.8	6.8	13.9	7.9	10.0	4.845	0.377	0.2	984.9	985.7	1.2	155	0.0	14.5	112	3.2	180	14
15	21.4	9.7	15.1	10.4	12.0	3.627	0.373	14.8	980.8	981.5	2.5	135	3.2	32.2	112	9.7	158	15
16	18.6	7.8	13.1	7.5	9.6	5.245	0.000	0.0	986.5	987.2	1.6	145	1.6	14.5	158	3.2	180	16
17	16.4	7.2	11.7	8.6	9.8	6.671	0.000	0.0	990.2	990.9	0.3	134	0.0	8.0	180	3.2	180	17
18	17.1	7.8	11.8	9.2	10.2	6.572	0.000	0.0	994.7	995.4	0.3	130	0.0	11.3	135	1.6	180	18
19	19.3	8.7	12.7	9.2	10.5	5.627	0.042	0.0	998.3	999.0	0.6	117	0.0	11.3	22	3.2	90	19
20	20.4	8.8	13.2	9.5	10.8	5.384	0.211	0.0	999.5	1000.2	1.4	150	0.0	12.9	112	3.2	135	20
21	19.7	7.1	13.1	8.8	10.3	5.435	0.178	0.0	998.9	999.6	0.6	150	0.0	9.7	112	3.2	180	21
22	20.3	8.4	13.4	10.2	11.3	5.213	0.234	0.0	999.0	999.7	0.6	102	0.0	11.3	135	3.2	45	22
23	21.3	9.4	14.6	10.5	11.9	4.150	0.426	0.0	996.4	997.2	0.7	160	0.0	8.0	180	3.2	180	23
24	17.6	11.0	13.9	12.2	12.8	4.458	0.000	2.6	992.0	992.8	0.6	153	0.0	17.7	180	3.2	135	24
25	20.7	9.4	14.1	10.4	11.7	4.458	0.266	0.0	990.5	991.2	1.0	147	0.0	14.5	158	3.2	158	25
26	22.3	9.6	15.3	9.8	11.6	3.831	0.806	0.0	986.5	987.2	0.8	170	0.0	20.9	112	3.2	158	26
27	18.8	11.5	15.0	11.4	12.6	3.340	0.012	4.4	985.0	985.7	0.7	134	0.0	25.7	180	4.8	180	27
28	18.5	9.8	13.4	9.8	11.1	4.903	0.000	0.0	991.5	992.2	0.5	8	1.6	12.9	22	3.2	22	28
29	19.7	7.9	12.8	8.5	10.0	5.623	0.123	0.0	994.1	994.8	1.0	174	0.0	9.7	158	1.6	180	29
30	20.2	8.7	13.7	9.8	11.2	4.884	0.220	0.0	998.1	998.8	0.7	153	0.0	11.3	135	3.2	90	30
31	20.9	8.1	13.5	10.6	11.6	5.111	0.257	0.0	997.7	998.4	0.4	128	0.0	8.0	180	3.2	180	31
	20.9	10.1	14.9	10.3	11.8	7.387	1.491		990.1	990.9	1.0	135.24	2.1	< Monthly Avg				
NUMBER OF DAYS WITH: >		Maximum Temp ≥ 32.2: 0 Maximum Temp ≤ 0: 0			Minimum Temp ≤ 0: 0 Minimum Temp ≤ -17.7: 0			Precipitation ≥ 0.2 mm: 6 Precipitation ≥ 2.0 mm: 5			Greatest 24 - hr precipitation: 15.0 Date: 14-15 Monthly Total Precipitation: 41.2							
SEA LEVEL PRESSURE: >		MAXIMUM: 1002.3 MINIMUM: 975.1		DATE 9 09:00 3 19:00		DEGREE DAYS: >		HEATING: 228.992 COOLING: 35.783		MONTHLY TOTAL 2400.758 0.613		SEASON TO DATE TOTAL						

OCTOBER 2020
, Abruzzo ITA

OCTOBER 2020

LOCAL CLIMATOLOGICAL DATA

DAVIS INSTRUMENTS, WEATHERLINK NETWORK

, Abruzzo ITA

Vasto Del Borrello



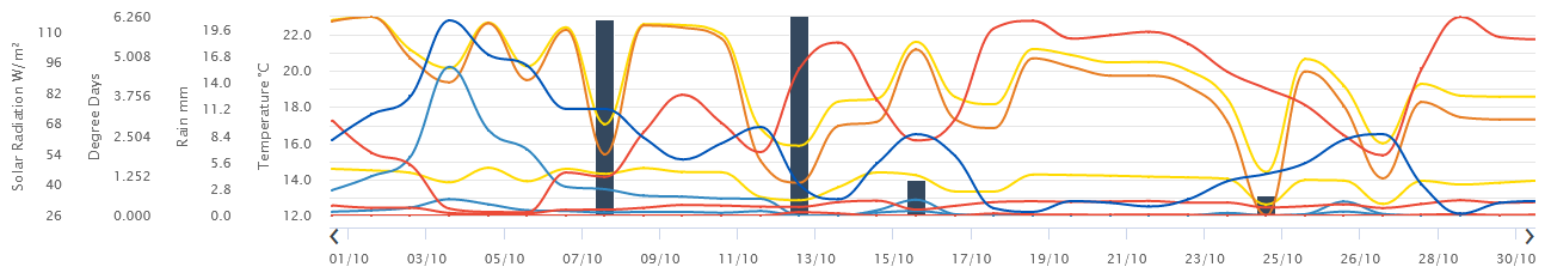
Lat: 42.1726 Long: 14.6826 Elev (ground): 39 meters Time Zone: Europe/Rome

TEMPERATURE °C						DEG DAYS BASE 18.3°		PRECIP. (mm)	PRESSURE (hPa)		WIND SPEED = km/h DIR = DEGREES						Date	
Date	MAXIMUM	MINIMUM	AVERAGE	AVERAGE DEW PT	AVERAGE WET BULB	HEATING	COOLING	WATER EQUIV	AVERAGE STATION	AVERAGE SEA LEVEL	RESULTANT SPEED	RES DIR	AVERAGE SPEED	WIND MAX				
														INSTANT		ARCHIVE		
														SPEED	DIR	SPEED		DIR
01	23.8	14.1	18.7	14.1	15.5	1.542	1.912	0.0	1005.7	1006.4	1.6	167	1.6	19.3	135	6.4	112	01
02	30.4	15.2	21.7	12.1	14.6	0.715	4.051	0.0	1001.1	1001.8	4.8	212	4.8	38.6	225	12.9	225	02
03	32.3	21.2	25.7	15.3	17.8	0.000	7.396	0.0	998.0	998.7	7.9	217	8.0	46.7	248	11.3	225	03
04	24.8	17.7	21.4	11.3	14.2	0.030	3.139	0.0	1004.7	1005.4	1.9	183	4.8	35.4	270	11.3	270	04
05	24.4	15.1	19.7	14.1	15.8	0.528	1.891	0.0	1006.3	1007.0	1.0	87	1.6	24.1	45	9.7	68	05
06	23.6	12.1	17.6	12.0	13.8	2.192	1.424	0.0	1011.7	1012.4	1.5	155	1.6	19.3	68	8.0	112	06
07	21.8	15.2	17.3	13.1	14.5	1.269	0.218	8.0	1008.2	1008.9	2.4	276	3.2	27.4	225	9.7	270	07
08	21.7	13.0	16.8	12.1	13.6	2.294	0.743	5.8	1017.1	1017.9	2.5	351	3.2	24.1	45	8.0	45	08
09	21.6	11.4	16.0	9.8	11.9	3.162	0.854	0.0	1018.1	1018.8	0.6	337	1.6	12.9	90	4.8	45	09
10	23.4	12.8	17.4	10.9	13.0	2.287	1.326	0.0	1014.4	1015.1	0.8	160	1.6	16.1	68	6.4	112	10
11	23.1	12.8	16.9	12.3	13.8	2.243	0.838	1.4	1007.1	1007.8	2.7	238	1.6	25.7	225	6.4	248	11
12	16.7	11.8	14.4	12.9	13.4	3.944	0.000	24.2	1003.6	1004.3	2.9	314	3.2	22.5	22	6.4	45	12
13	16.8	9.3	12.6	9.8	10.9	5.743	0.000	6.6	1005.0	1005.7	2.0	303	1.6	17.7	292	3.2	315	13
14	21.4	7.3	15.3	9.6	11.5	3.736	0.748	0.0	1005.8	1006.5	1.7	211	3.2	22.5	90	8.0	90	14
15	23.2	11.9	16.9	11.6	13.3	2.271	0.884	16.0	1001.9	1002.6	2.9	233	3.2	33.8	248	8.0	248	15
16	19.8	8.1	14.3	8.5	10.6	4.211	0.187	0.0	1007.3	1008.0	1.2	182	1.6	16.1	180	6.4	90	16
17	18.2	9.2	13.4	9.6	11.0	4.912	0.000	0.0	1011.3	1012.0	0.6	327	1.6	16.1	248	4.8	45	17
18	18.7	10.3	13.6	10.4	11.5	4.738	0.007	0.0	1015.9	1016.6	0.5	273	1.6	14.5	68	4.8	45	18
19	19.3	10.2	14.0	10.4	11.7	4.410	0.083	0.0	1019.8	1020.6	0.6	226	1.6	14.5	45	4.8	68	19
20	20.1	10.6	14.3	10.8	12.0	4.322	0.241	0.0	1021.1	1021.8	1.2	194	1.6	14.5	135	4.8	68	20
21	20.8	8.2	14.0	9.3	11.0	4.701	0.329	0.0	1020.3	1021.1	1.3	205	1.6	19.3	90	4.8	158	21
22	19.2	9.7	14.0	10.6	11.9	4.407	0.093	0.0	1020.5	1021.3	0.4	213	1.6	14.5	68	4.8	45	22
23	20.4	10.3	14.9	12.0	13.0	3.769	0.312	0.0	1017.9	1018.6	1.5	199	1.6	14.5	158	4.8	158	23
24	20.1	12.6	15.1	13.7	14.2	3.310	0.067	2.6	1013.0	1013.8	1.3	244	1.6	19.3	180	4.8	248	24
25	20.0	11.3	14.8	11.6	12.7	3.806	0.275	0.2	1011.6	1012.3	0.6	226	1.6	12.9	68	4.8	90	25
26	22.7	10.0	16.8	11.2	13.0	2.347	0.854	0.0	1007.6	1008.3	3.1	228	3.2	32.2	248	11.3	225	26
27	19.6	13.9	17.3	12.8	14.3	1.176	0.192	1.4	1005.7	1006.4	1.1	173	4.8	33.8	22	16.1	68	27
28	19.7	11.5	14.5	11.3	12.5	3.803	0.002	0.8	1012.2	1013.0	1.7	323	1.6	19.3	292	3.2	292	28
29	19.5	9.6	13.9	9.1	10.8	4.576	0.100	0.0	1015.2	1015.9	0.9	230	1.6	12.9	248	3.2	270	29
30	19.2	11.0	14.2	10.9	12.1	4.222	0.104	0.0	1019.4	1020.2	0.4	216	1.6	12.9	68	4.8	45	30
31	18.6	9.6	13.7	11.5	12.3	4.660	0.009	0.0	1019.2	1020.0	0.2	332	1.6	12.9	68	4.8	68	31
	21.4	11.8	16.2	11.4	13.0	5.720	1.818		1011.2	1011.9	1.7	233.36	2.4	< Monthly Avg				
NUMBER OF DAYS WITH:	>	Maximum Temp ≥ 32.2: 1	Minimum Temp ≤ 0: 0	Precipitation ≥ 0.2 mm: 9	Greatest 24 - hr precipitation: 29.4 Date: 12-13	Maximum Temp ≤ 0: 0	Minimum Temp ≤ -17.7: 0	Precipitation ≥ 2.0 mm: 6	Monthly Total Precipitation: 67.0									
SEA LEVEL PRESSURE:	>	MAXIMUM: 1024.3	DATE: 22	TIME: 09:00	MONTHLY TOTAL: 171.588	MINIMUM: 996.5	DATE: 3	TIME: 18:00	DEGREEE DAYS: >	HEATING: 2043.158	COOLING: 50.904	SEASON TO DATE TOTAL: 0.712						

OCTOBER 2020
, Abruzzo ITA

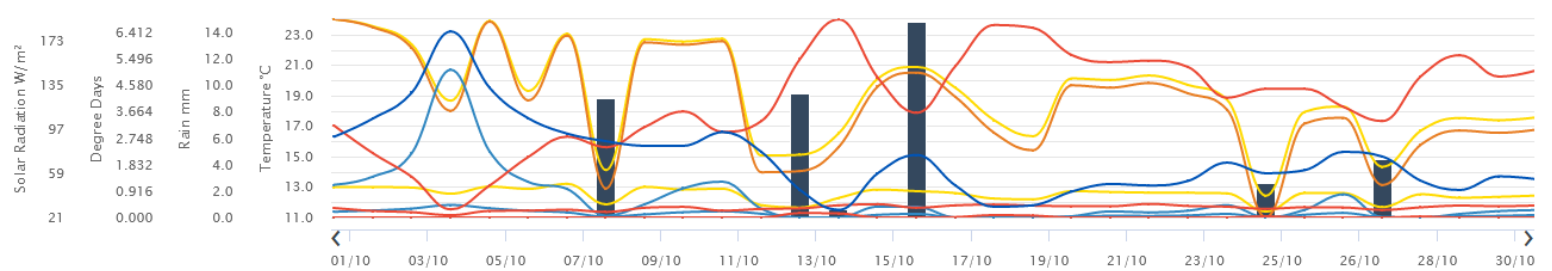
Francavilla

Temp. Media Pioggia GradiGiorno Riscaldamento High Heating Degree Days Low Heating Degree Days GradiGiorno Raffreddamento High Cooling Degree Days
Low Cooling Degree Days Avg Solar Rad Avg Solar Energy High Solar Energy Low Solar Energy



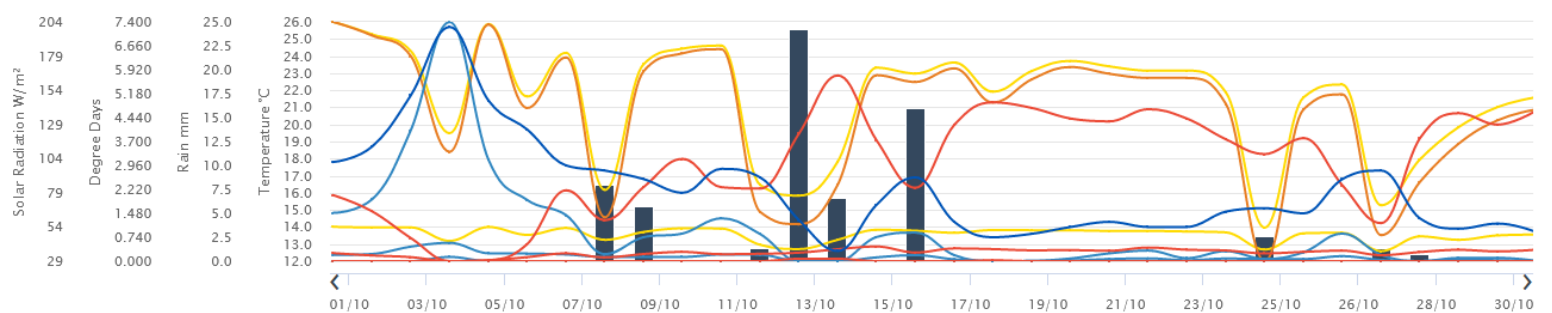
Lanciano

Temp. Media Pioggia GradiGiorno Riscaldamento High Heating Degree Days Low Heating Degree Days GradiGiorno Raffreddamento High Cooling Degree Days
Low Cooling Degree Days Avg Solar Rad Avg Solar Energy High Solar Energy Low Solar Energy



Vasto

Temp. Media Pioggia GradiGiorno Riscaldamento High Heating Degree Days Low Heating Degree Days GradiGiorno Raffreddamento High Cooling Degree Days
Low Cooling Degree Days Avg Solar Rad Avg Solar Energy High Solar Energy Low Solar Energy





AGROFENOLOGIA

(VITE)

Nel mese di ottobre si sono concluse le operazioni di vendemmia sul territorio. Non si sono riscontrate problematiche nel periodo e la produzione di uve può essere valutata positivamente sia in termini quantitativi che qualitativi. Rispetto al periodo precedente le precipitazioni sono aumentate sia rispetto alla intensità dei singoli eventi atmosferici sia rispetto alle giornate complessive. Da segnalare anche dei bruschi cali termici registrati in diversi giorni.

OPERAZIONI AGRONOMICHE E INTERVENTI FITOSANITARI SUGGERITI

In questa fase, avendo concluso le operazioni di vendemmia, possono essere realizzate attività di concimazione autunnale dei campi. La concimazione autunnale riveste un ruolo molto importante in quanto da un punto di vista fisiologico l'attività radicale ha due picchi di attività, uno in primavera e uno in autunno. Nel corso di questo secondo periodo le piante utilizzano gli elementi nutritivi per produrre riserve da stoccare nel legno e nelle gemme, riserve che saranno utilizzate nella fase di ripresa vegetativa quando l'apparato fogliare è in corso di formazione. Dunque, anche al fine di garantire un regolare germogliamento, si consiglia di somministrare fertilizzanti nel periodo in essere. La concimazione può essere effettuata attraverso l'apporto di sostanza organica, in particolare in vigneti a scarso sviluppo vegetativo, o attraverso la somministrazione di elementi come fosforo e potassio, anche in formulati organo-minerali. Anche l'azoto può essere efficacemente utilizzato, anche se il verificarsi di forti precipitazioni potrebbe portare ad un eccessivo dilavamento. Si raccomanda a questo proposito l'accesso ai dati delle stazioni meteo al fine di programmare adeguatamente i trattamenti.



Agire Soc. Cons. a r.l.
P.Iva 01776590679
Via Isidoro e Lepido Facii snc - 64100 Sant'Atto - Teramo
info@poloagire.it; - Tel.: +39 0861 232435
www.poloagire.it