



BOLLETTINO AGROMETEOROLOGICO

Luglio 2021



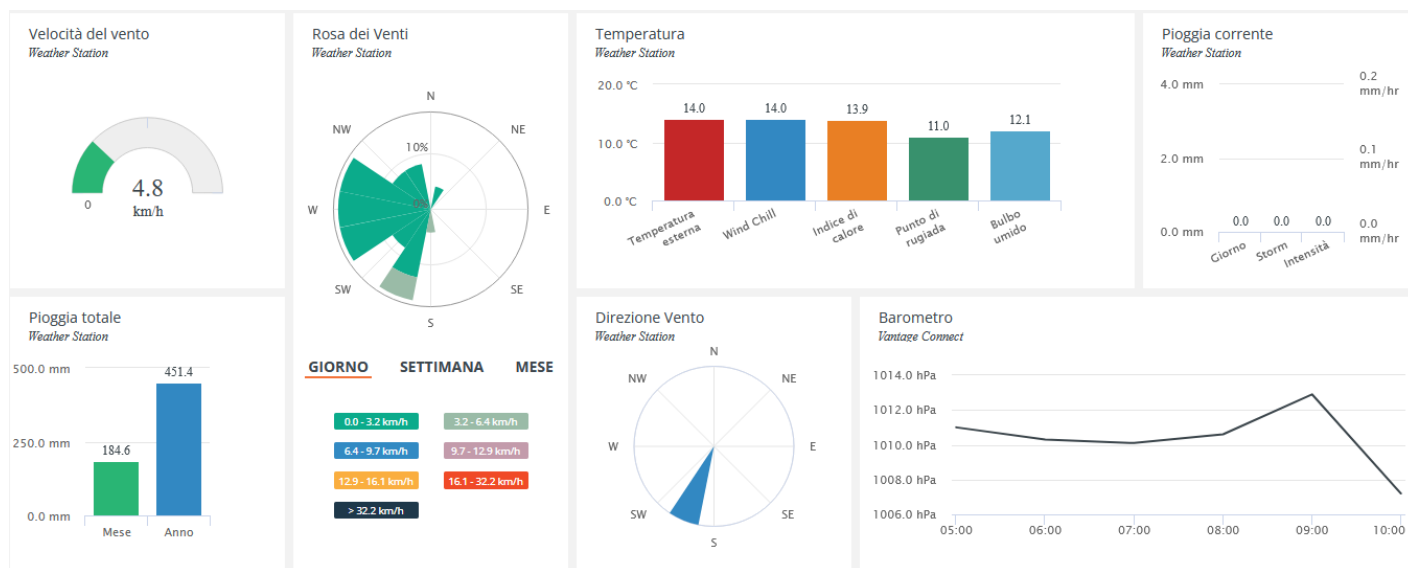
Fondo europeo agricolo per lo sviluppo rurale:
l'Europa investe nelle zone rurali





I bollettini Agrometeorologici vengono pubblicati con cadenza mensile sulla base delle informazioni raccolte in relazione a tre stazioni meteo installate nei pressi di Francavilla al Mare (CH), Vasto (CH) e Spaccarelli (CH).

Per avere accesso ai dati in tempo reale scrivici a questo indirizzo: info@poloagire.it



JULY 2021

LOCAL CLIMATOLOGICAL DATA

DAVIS INSTRUMENTS, WEATHERLINK NETWORK

Francavilla al Mare, Abruzzo ITA

Francavilla Galasso



Lat: 42.4270 Long: 14.2602 Elev (ground): 54 meters Time Zone: Europe/Rome

TEMPERATURE °C						DEG DAYS BASE 18.3°		PRECIP. (mm)	PRESSURE (hPa)		WIND SPEED = km/h DIR = DEGREES						Date	
Date	MAXIMUM	MINIMUM	AVERAGE	AVERAGE DEW PT	AVERAGE WET BULB	HEATING	COOLING	WATER EQUIV	AVERAGE STATION	AVERAGE SEA LEVEL	RESULTANT SPEED	RES DIR	AVERAGE SPEED	WIND MAX				
														INSTANT		ARCHIVE		
														SPEED	DIR	SPEED		DIR
01	29.4	21.3	25.6	16.5	18.8	0.000	7.308	0.0	1007.0	1007.7	3.2	155	3.2	27.4	158	11.3	158	01
02	28.2	19.7	25.1	17.6	19.4	0.000	6.720	0.0	1008.6	1009.4	1.7	129	1.6	17.7	158	6.4	135	02
03	28.5	18.1	24.5	17.5	19.3	0.000	6.150	0.0	1009.5	1010.2	2.4	159	1.6	20.9	158	8.0	158	03
04	29.3	19.8	25.2	19.7	21.1	0.000	6.854	0.0	1005.4	1006.2	1.7	127	1.6	19.3	158	8.0	135	04
05	27.9	21.4	25.2	20.5	21.7	0.000	6.836	0.0	1006.3	1007.0	3.5	46	3.2	20.9	90	8.0	45	05
06	28.9	18.8	24.8	19.6	20.8	0.000	6.488	0.0	1008.6	1009.3	2.8	157	1.6	19.3	158	8.0	158	06
07	29.8	19.0	25.8	20.5	21.8	0.000	7.470	0.0	1009.1	1009.9	2.6	152	1.6	22.5	158	9.7	158	07
08	34.3	21.3	28.2	21.1	22.6	0.000	9.870	0.0	1010.6	1011.3	0.9	131	1.6	19.3	158	4.8	112	08
09	32.8	21.1	27.4	20.2	21.8	0.000	9.104	0.0	1011.6	1012.4	2.5	84	3.2	22.5	158	6.4	90	09
10	29.4	19.2	25.1	19.2	20.6	0.000	6.718	0.0	1009.6	1010.3	1.3	90	3.2	19.3	22	6.4	90	10
11	29.9	19.0	25.5	18.4	20.1	0.000	7.146	0.0	1007.6	1008.3	2.3	157	1.6	20.9	135	6.4	135	11
12	30.2	19.1	25.7	19.1	20.7	0.000	7.396	0.0	1008.1	1008.9	2.7	159	1.6	19.3	158	8.0	158	12
13	34.4	21.2	27.5	19.6	21.3	0.000	9.162	0.0	1003.0	1003.7	1.1	165	1.6	20.9	158	8.0	158	13
14	29.7	21.3	25.7	20.1	21.5	0.000	7.391	0.0	1006.6	1007.3	4.0	126	3.2	24.1	135	8.0	135	14
15	28.7	19.4	24.4	17.5	19.2	0.000	6.028	0.0	1008.4	1009.1	3.6	157	3.2	27.4	158	11.3	158	15
16	27.0	20.1	22.9	18.8	19.9	0.000	4.558	0.6	1007.1	1007.8	2.4	53	3.2	24.1	135	9.7	90	16
17	23.3	17.9	19.4	18.0	18.5	0.025	1.102	20.8	1004.0	1004.7	3.3	335	3.2	22.5	360	8.0	338	17
18	27.6	18.4	23.8	20.3	21.2	0.000	5.502	0.0	1002.3	1003.1	5.9	15	6.4	29.0	45	11.3	45	18
19	27.9	22.2	24.7	19.7	21.0	0.000	6.417	0.0	1005.2	1005.9	6.1	11	6.4	25.7	360	9.7	45	19
20	28.3	20.6	25.0	19.5	20.8	0.000	6.620	0.0	1009.1	1009.8	2.0	39	3.2	20.9	360	6.4	22	20
21	28.4	19.7	24.7	19.0	20.4	0.000	6.366	0.0	1012.2	1013.0	1.6	143	1.6	19.3	135	4.8	135	21
22	27.3	19.8	24.3	18.1	19.6	0.000	5.947	0.0	1012.7	1013.4	1.4	118	1.6	17.7	135	6.4	112	22
23	27.9	18.3	24.2	18.5	19.9	0.000	5.863	0.0	1009.9	1010.7	1.8	126	1.6	19.3	158	6.4	112	23
24	32.2	19.6	26.1	19.5	21.0	0.000	7.782	0.0	1008.2	1008.9	2.7	167	1.6	22.5	158	8.0	158	24
25	36.9	21.9	28.4	19.8	21.6	0.000	10.049	0.0	1005.7	1006.4	1.0	195	1.6	16.1	158	4.8	225	25
26	35.3	24.4	29.6	18.2	20.6	0.000	11.278	0.0	1008.5	1009.2	0.6	106	1.6	19.3	338	4.8	45	26
27	33.4	23.4	27.9	18.7	20.8	0.000	9.542	0.0	1011.1	1011.8	1.0	141	1.6	16.1	68	6.4	112	27
28	31.9	25.3	29.2	17.9	20.3	0.000	10.826	0.0	1008.9	1009.7	1.3	121	1.6	24.1	360	6.4	338	28
29	32.9	21.8	27.4	19.2	21.0	0.000	9.028	0.0	1008.4	1009.1	1.2	111	1.6	14.5	158	4.8	90	29
30	32.4	20.1	27.7	17.4	19.6	0.000	9.340	0.0	1006.8	1007.5	2.1	167	1.6	19.3	158	6.4	158	30
31	32.8	23.3	28.3	21.4	22.9	0.000	9.951	0.0	1003.8	1004.5	2.2	155	1.6	22.5	158	8.0	158	31
	30.2	20.5	25.8	19.1	20.6	0.046	13.402		1007.9	1008.6	2.3	128.97	2.4	< Monthly Avg				
NUMBER OF DAYS WITH: >		Maximum Temp ≥ 32.2: 9			Minimum Temp ≤ 0: 0			Precipitation ≥ 0.2 mm: 2			Greatest 24 - hr precipitation: 20.8 Date: 16-17							
		Maximum Temp ≤ 0: 0			Minimum Temp ≤ -17.7: 0			Precipitation ≥ 2.0 mm: 1			Monthly Total Precipitation: 21.4							
SEA LEVEL PRESSURE: >		MAXIMUM: 1015.0		DATE: 22		TIME: 11:00		DEGREEE DAYS: >		HEATING: 0.046		MONTHLY TOTAL: 415.462		SEASON TO DATE TOTAL: 370.537				
		MINIMUM: 1001.7		DATE: 13		TIME: 18:00				COOLING: 415.462				1357.129				

JULY 2021
Francavilla al Mare, Abruzzo ITA

JULY 2021

LOCAL CLIMATOLOGICAL DATA

DAVIS INSTRUMENTS, WEATHERLINK NETWORK

, Abruzzo ITA
Lanciano Eredi Legonziano



Lat: 42.2266 Long: 14.3454 Elev (ground): 237 meters Time Zone: Europe/Rome

TEMPERATURE °C						DEG DAYS BASE 18.3°		PRECIP. (mm)	PRESSURE (hPa)		WIND SPEED = km/h DIR = DEGREES						Date		
Date	MAXIMUM	MINIMUM	AVERAGE	AVERAGE DEW PT	AVERAGE WET BULB	HEATING	COOLING	WATER EQUIV	AVERAGE STATION	AVERAGE SEA LEVEL	RESULTANT SPEED	RES DIR	AVERAGE SPEED	WIND MAX					
														INSTANT		ARCHIVE			
														SPEED	DIR	SPEED		DIR	
01	30.6	18.3	25.1	14.2	16.9	0.000	6.815	0.0	987.8	988.5	1.9	136	1.6	20.9	135	6.4	135	01	
02	30.1	18.7	25.1	14.4	17.0	0.000	6.743	0.0	989.3	990.0	1.0	74	1.6	12.9	112	3.2	180	02	
03	30.6	18.6	25.0	14.9	17.3	0.000	6.655	0.0	990.3	991.0	0.8	100	0.0	20.9	135	3.2	22	03	
04	32.4	20.6	26.0	16.9	19.0	0.000	7.706	0.0	986.4	987.2	0.6	79	1.6	12.9	112	3.2	180	04	
05	29.1	20.2	25.0	18.2	19.8	0.000	6.646	0.0	987.0	987.8	2.0	26	1.6	14.5	45	4.8	22	05	
06	32.4	17.9	26.2	17.1	19.1	0.012	7.861	0.0	989.3	990.0	0.9	66	0.0	14.5	68	3.2	45	06	
07	35.9	22.1	29.0	16.8	19.3	0.000	10.678	0.0	990.0	990.8	1.0	129	0.0	16.1	112	4.8	135	07	
08	36.8	22.7	30.1	17.6	20.1	0.000	11.787	0.0	991.7	992.4	0.6	119	0.0	16.1	180	3.2	22	08	
09	30.9	20.4	27.1	17.3	19.5	0.000	8.782	0.0	992.3	993.1	1.3	62	1.6	14.5	112	3.2	158	09	
10	31.0	19.2	25.5	16.8	18.8	0.000	7.185	0.0	990.4	991.1	1.3	31	1.6	12.9	68	3.2	22	10	
11	32.5	19.0	26.3	15.9	18.3	0.000	7.979	0.0	988.4	989.2	1.6	47	0.0	14.5	68	3.2	22	11	
12	33.0	19.4	26.8	16.2	18.5	0.000	8.488	0.0	989.0	989.7	1.3	136	1.6	19.3	135	4.8	135	12	
13	37.4	21.9	29.4	15.8	18.5	0.000	11.019	0.0	984.5	985.2	2.5	177	1.6	29.0	180	6.4	180	13	
14	28.7	19.1	25.1	18.6	20.1	0.000	6.734	0.0	987.0	987.7	1.7	63	1.6	16.1	180	4.8	68	14	
15	29.3	17.3	23.7	16.5	18.3	0.069	5.475	0.0	989.1	989.8	0.9	126	1.6	17.7	68	3.2	180	15	
16	26.6	18.8	21.5	17.7	18.7	0.000	3.120	2.8	987.9	988.6	0.6	21	0.0	16.1	45	4.8	22	16	
17	24.5	17.3	19.1	16.9	17.5	0.178	0.949	8.0	984.6	985.3	0.6	347	0.0	12.9	22	3.2	338	17	
18	28.3	18.5	23.3	18.1	19.4	0.000	4.993	0.0	983.3	984.0	2.4	9	1.6	19.3	22	6.4	22	18	
19	28.5	21.6	24.1	18.2	19.7	0.000	5.750	0.0	985.9	986.6	2.7	11	1.6	19.3	22	6.4	22	19	
20	31.3	19.9	25.5	16.1	18.3	0.000	7.169	0.0	989.7	990.4	1.4	14	1.6	14.5	22	3.2	338	20	
21	32.9	18.7	26.0	14.9	17.4	0.000	7.667	0.0	992.9	993.6	1.3	43	0.0	12.9	90	3.2	22	21	
22	31.0	18.9	25.6	13.7	16.5	0.000	7.294	0.0	993.3	994.0	0.9	60	0.0	14.5	112	3.2	22	22	
23	32.3	18.2	25.8	14.5	17.1	0.002	7.454	0.0	990.6	991.3	0.7	59	0.0	12.9	112	3.2	22	23	
24	35.6	19.4	28.0	17.0	19.3	0.000	9.644	0.0	989.1	989.8	1.8	130	1.6	17.7	112	4.8	135	24	
25	37.6	22.6	29.5	15.2	18.1	0.000	11.171	0.0	986.9	987.6	1.1	190	1.6	19.3	315	4.8	315	25	
26	36.4	25.4	30.7	12.1	15.8	0.000	12.326	0.0	989.6	990.4	0.7	127	1.6	17.7	158	3.2	180	26	
27	37.2	23.6	29.7	13.1	16.5	0.000	11.387	0.0	992.2	992.9	0.8	125	1.6	12.9	135	3.2	158	27	
28	37.8	23.3	30.6	12.4	16.0	0.000	12.262	0.0	989.9	990.6	1.1	124	1.6	17.7	158	4.8	135	28	
29	34.8	21.6	28.4	13.6	16.7	0.000	10.058	0.0	989.2	989.9	1.2	81	1.6	17.7	112	3.2	68	29	
30	36.1	20.8	29.4	14.4	17.4	0.000	11.116	0.0	987.8	988.5	1.5	136	1.6	19.3	112	4.8	112	30	
31	38.6	23.3	31.3	15.7	18.7	0.000	12.968	0.0	984.7	985.4	1.9	132	1.6	20.9	135	6.4	112	31	
	32.6	20.2	26.6	15.8	18.2	0.118	14.858		988.7	989.4	1.3	96.11	1.6	< Monthly Avg					
NUMBER OF DAYS WITH:		>		Maximum Temp ≥ 32.2: 17		Minimum Temp ≤ 0: 0		Precipitation ≥ 0.2 mm: 2		Precipitation ≥ 2.0 mm: 2		Greatest 24 - hr precipitation: 8.4 Date: 16-17						Monthly Total Precipitation: 10.8	
SEA LEVEL PRESSURE:		>		MAXIMUM: 997.4		DATE: 9		TIME: 08:00		DEGREE DAYS: >		HEATING: 0.471		MONTHLY TOTAL: 460.583		SEASON TO DATE TOTAL: 438.600		1502.237	

JULY 2021
, Abruzzo ITA

JULY 2021

LOCAL CLIMATOLOGICAL DATA

DAVIS INSTRUMENTS, WEATHERLINK NETWORK

, Abruzzo ITA
Vasto Del Borrello



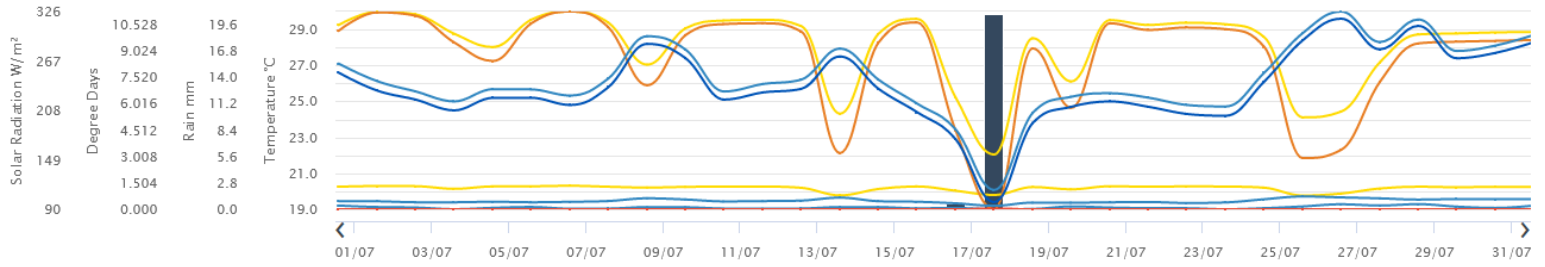
Lat: 42.1726 Long: 14.6826 Elev (ground): 39 meters Time Zone: Europe/Rome

TEMPERATURE °C						DEG DAYS BASE 18.3°		PRECIP. (mm)	PRESSURE (hPa)		WIND SPEED = km/h DIR = DEGREES						Date	
Date	MAXIMUM	MINIMUM	AVERAGE	AVERAGE DEW PT	AVERAGE WET BULB	HEATING	COOLING	WATER EQUIV	AVERAGE STATION	AVERAGE SEA LEVEL	RESULTANT SPEED	RES DIR	AVERAGE SPEED	WIND MAX				
														INSTANT		ARCHIVE		
														SPEED	DIR	SPEED		DIR
01	29.9	19.8	25.4	17.0	19.1	0.000	7.088	0.0	1008.4	1009.2	2.6	122	3.2	29.0	90	9.7	112	01
02	29.3	19.2	24.8	18.3	19.9	0.000	6.495	0.0	1009.7	1010.5	1.2	63	1.6	17.7	68	6.4	68	02
03	30.6	19.9	25.3	17.3	19.2	0.000	6.928	0.0	1010.8	1011.5	1.4	127	3.2	19.3	135	8.0	112	03
04	31.0	20.9	25.9	19.1	20.8	0.000	7.600	0.0	1006.5	1007.3	1.4	125	1.6	17.7	90	6.4	68	04
05	28.7	21.2	25.4	20.0	21.3	0.000	7.090	0.0	1007.4	1008.1	3.4	36	3.2	24.1	68	8.0	45	05
06	30.6	19.7	25.3	19.6	20.9	0.000	6.924	0.0	1009.8	1010.6	1.2	112	1.6	19.3	112	6.4	90	06
07	32.8	19.4	26.7	19.6	21.2	0.000	8.405	0.0	1010.4	1011.1	1.9	142	1.6	19.3	135	6.4	135	07
08	32.6	21.3	27.7	21.1	22.6	0.000	9.368	0.0	1012.0	1012.7	0.7	170	3.2	20.9	270	6.4	270	08
09	30.8	22.3	27.7	19.8	21.6	0.000	9.412	0.0	1012.6	1013.3	2.0	29	1.6	19.3	22	8.0	45	09
10	29.5	20.6	25.6	19.0	20.6	0.000	7.301	0.0	1010.6	1011.4	1.5	6	3.2	19.3	22	6.4	45	10
11	31.9	21.1	26.5	18.3	20.2	0.000	8.141	0.0	1008.8	1009.6	1.8	96	1.6	17.7	135	6.4	90	11
12	31.8	20.6	26.6	19.2	20.9	0.000	8.231	0.0	1009.4	1010.1	2.0	148	3.2	20.9	135	8.0	135	12
13	38.0	21.2	29.4	17.1	19.5	0.000	11.044	0.0	1004.5	1005.2	3.5	227	3.2	40.2	292	12.9	248	13
14	29.5	21.3	26.9	20.0	21.6	0.000	8.579	0.0	1007.5	1008.3	2.4	56	4.8	29.0	270	11.3	270	14
15	29.2	20.5	24.9	17.7	19.5	0.000	6.565	0.0	1009.6	1010.3	1.8	86	3.2	20.9	68	9.7	90	15
16	27.7	19.4	23.0	18.5	19.7	0.000	4.641	40.0	1008.0	1008.7	1.8	359	3.2	25.7	45	9.7	45	16
17	24.6	18.5	20.5	18.2	18.9	0.000	2.181	3.0	1005.2	1005.9	2.6	301	1.6	22.5	270	4.8	315	17
18	27.9	18.6	23.5	20.5	21.2	0.000	5.157	2.0	1003.0	1003.8	3.1	322	3.2	22.5	338	4.8	315	18
19	27.8	22.0	24.4	20.5	21.5	0.000	6.111	8.6	1005.7	1006.4	2.9	344	3.2	29.0	22	8.0	45	19
20	28.5	19.9	24.6	19.6	20.8	0.000	6.255	0.0	1010.0	1010.7	1.6	337	1.6	17.7	338	4.8	292	20
21	28.9	18.9	24.3	19.2	20.5	0.000	5.944	0.0	1013.4	1014.2	0.9	50	1.6	16.1	90	6.4	68	21
22	27.9	19.6	24.1	18.1	19.6	0.000	5.718	0.0	1013.7	1014.4	1.4	38	1.6	19.3	45	6.4	45	22
23	28.5	18.2	24.3	18.4	19.9	0.002	6.012	0.0	1011.2	1012.0	1.3	66	1.6	19.3	112	8.0	68	23
24	32.8	20.1	26.6	20.3	21.8	0.000	8.310	0.0	1009.6	1010.3	2.7	167	3.2	20.9	112	6.4	135	24
25	36.3	22.6	29.7	17.8	20.2	0.000	11.380	0.0	1007.3	1008.0	2.9	236	3.2	29.0	180	11.3	248	25
26	35.4	23.1	29.5	17.5	19.9	0.000	11.153	0.0	1009.7	1010.4	0.5	85	1.6	25.7	270	9.7	248	26
27	35.2	22.4	27.5	18.4	20.5	0.000	9.197	0.0	1012.2	1013.0	0.4	74	1.6	14.5	68	4.8	68	27
28	34.2	21.2	28.3	17.4	19.8	0.000	9.975	0.0	1010.3	1011.0	0.8	97	1.6	14.5	135	4.8	45	28
29	33.2	22.3	27.4	20.2	21.8	0.000	9.090	0.0	1009.5	1010.2	1.3	31	1.6	14.5	68	6.4	45	29
30	34.2	20.2	28.0	16.5	18.9	0.000	9.655	0.0	1008.2	1008.9	1.4	166	3.2	17.7	68	6.4	90	30
31	36.5	21.6	30.2	18.5	20.9	0.000	11.845	0.0	1005.0	1005.7	2.6	173	3.2	22.5	180	8.0	135	31
	31.2	20.6	26.1	18.8	20.5	0.004	14.040		1009.0	1009.8	1.8	141.66	2.5	< Monthly Avg				
NUMBER OF DAYS WITH: >		Maximum Temp ≥ 32.2: 11			Minimum Temp ≤ 0: 0			Precipitation ≥ 0.2 mm: 4			Greatest 24 - hr precipitation: 42.6 Date: 16-17							
		Maximum Temp ≤ 0: 0			Minimum Temp ≤ -17.7: 0			Precipitation ≥ 2.0 mm: 3			Monthly Total Precipitation: 53.6							
SEA LEVEL PRESSURE: >		MAXIMUM: 1016.7		DATE: 22		TIME: 10:00		DEGREEE DAYS: >		HEATING: 0.004		MONTHLY TOTAL: 435.229		SEASON TO DATE TOTAL: 316.046				
		MINIMUM: 1001.7		DATE: 18		TIME: 08:00				COOLING: 435.229				1442.692				

JULY 2021
, Abruzzo ITA

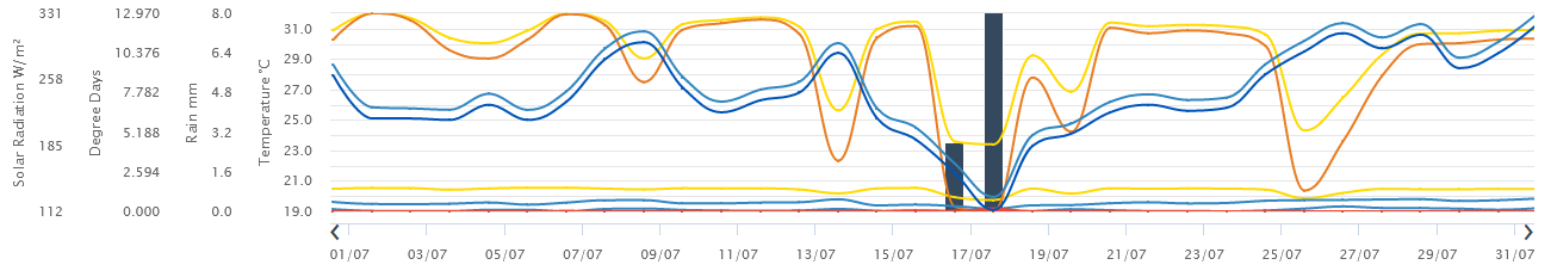
Francavilla

Temp. Media Pioggia GradiGiorno Riscaldamento High Heating Degree Days Low Heating Degree Days GradiGiorno Raffreddamento High Cooling Degree Days
Low Cooling Degree Days Avg Solar Rad Avg Solar Energy High Solar Energy Low Solar Energy



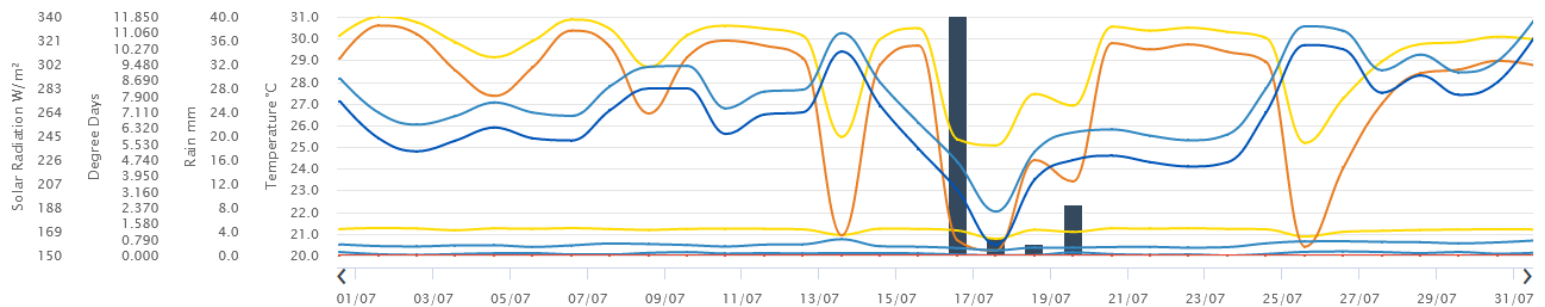
Lanciano

Temp. Media Pioggia GradiGiorno Riscaldamento High Heating Degree Days Low Heating Degree Days GradiGiorno Raffreddamento High Cooling Degree Days
Low Cooling Degree Days Avg Solar Rad Avg Solar Energy High Solar Energy Low Solar Energy



Vasto

Temp. Media Pioggia GradiGiorno Riscaldamento High Heating Degree Days Low Heating Degree Days GradiGiorno Raffreddamento High Cooling Degree Days
Low Cooling Degree Days Avg Solar Rad Avg Solar Energy High Solar Energy Low Solar Energy





AGROFENOLOGIA

(VITE)

Tutti i vigneti hanno concluso lo sviluppo del grappolo. Per i vigneti precoci la fase prevalente è inizio della maturazione (BBCH 81) mentre per varietà tardive come il Montepulciano si ha solo qualche accenno di invaiatura. I grappoli si presentano spargoli, ramificati, ciò in ragione delle scarse precipitazioni registrate fin'ora.

OPERAZIONI AGRONOMICHE E INTERVENTI FITOSANITARI SUGGERITI

Per quanto riguarda le operazioni agronomiche, possono essere sospese le operazioni di potatura verde. Può essere necessario, invece, procedere all'irrigazione di soccorso. Si consiglia di richiedere l'accesso ai dati delle stazioni meteo al fine di programmare eventuali interventi a riguardo.

In merito alla situazione fitosanitaria, le condizioni non sono variate e non si sono manifestate criticità tali da mettere a rischio la produzione.

Peronospora: per i vigneti già protetti e in mancanza di evidenze specifiche, si consiglia di terminare gli interventi; specie nelle aree dove è iniziata l'invaiatura. Solo in caso di sintomi evidenti e mutate condizioni meteo può essere valutata la possibilità di effettuare dei trattamenti con rame addizionato a cimoxanil, o olio di arancio dolce, nelle zone di entroterra, dove non è ancora iniziata l'invaiatura.

Tignoletta: le catture di adulti sono ancora basse ma si osserva l'inizio del volo della terza generazione, la più pericolosa. Sulla base delle condizioni specifiche può essere opportuno intervenire con regolatori di crescita o larvicidi; si consiglia di valutare la necessità degli interventi con i tecnici aziendali.

Oidio: Le osservazioni raccolte mostrano un'incidenza dell'infezione lieve e non importante. Fanno eccezione alcune zone limitate nelle quali, comunque, si registrano danni di entità ridotta e limitata. Se necessario, è possibile proteggere il grappolo utilizzando prodotti a base di zolfo (secco o bagnabile).

Mal dell'esca e virosi: si registrano alcune segnalazioni. Si invita a continuare il monitoraggio con attenzione.



Agire Soc. Cons. a r.l.
P.Iva 01776590679
Via Isidoro e Lepido Facii snc - 64100 Sant'Atto - Teramo
info@poloagire.it; - Tel.: +39 0861 232435
www.poloagire.it