



BOLLETTINO AGROMETEOROLOGICO

Agosto 2021



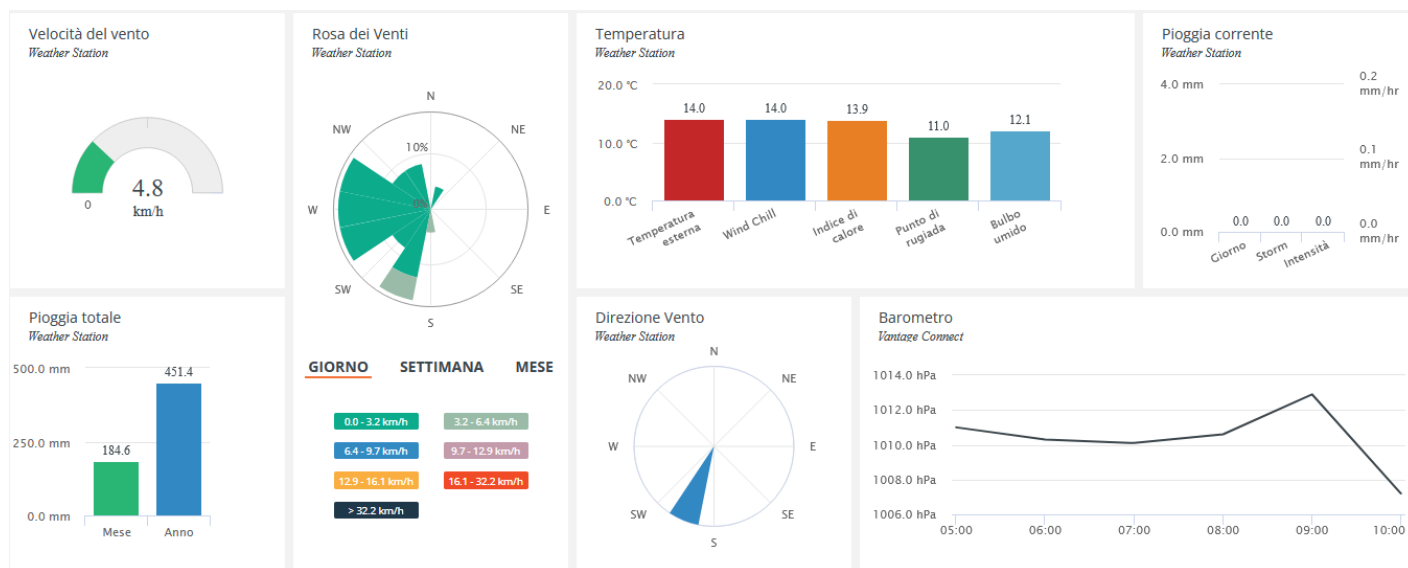
Fondo europeo agricolo per lo sviluppo rurale:
l'Europa investe nelle zone rurali





I bollettini Agrometeorologici vengono pubblicati con cadenza mensile sulla base delle informazioni raccolte in relazione a tre stazioni meteo installate nei pressi di Francavilla al Mare (CH), Vasto (CH) e Spaccarelli (CH).

Per avere accesso ai dati in tempo reale scrivici a questo indirizzo: info@poloagire.it



AUGUST 2021

LOCAL CLIMATOLOGICAL DATA

DAVIS INSTRUMENTS, WEATHERLINK NETWORK

Francavilla al Mare, Abruzzo ITA

Francavilla Galasso

Lat: 42.4270 Long: 14.2602 Elev (ground): 54 meters Time Zone: Europe/Rome



TEMPERATURE °C						DEG DAYS BASE 18.3°		PRECIP. (mm)	PRESSURE (hPa)		WIND SPEED = km/h DIR = DEGREES						Date	
Date	MAXIMUM	MINIMUM	AVERAGE	AVERAGE DEW PT	AVERAGE WET BULB	HEATING	COOLING	WATER EQUIV	AVERAGE STATION	AVERAGE SEA LEVEL	RESULTANT SPEED	RES DIR	AVERAGE SPEED	WIND MAX				
														INSTANT		ARCHIVE		
														SPEED	DIR	SPEED		DIR
01	41.2	25.4	34.8	13.7	17.3	0.000	16.435	0.0	1001.9	1002.7	1.9	264	1.6	27.4	292	6.4	338	01
02	29.9	21.6	26.3	17.8	19.8	0.000	7.942	0.0	1007.9	1008.6	3.8	149	3.2	29.0	158	12.9	158	02
03	28.0	18.5	24.0	17.9	19.4	0.000	5.648	0.0	1009.8	1010.6	2.3	163	1.6	17.7	158	6.4	135	03
04	29.0	19.3	25.2	20.0	21.3	0.000	6.847	0.0	1007.3	1008.0	2.3	160	3.2	22.5	158	8.0	158	04
05	28.6	22.9	26.3	20.2	21.6	0.000	7.970	0.0	1002.7	1003.5	2.7	158	3.2	24.1	158	9.7	158	05
06	29.1	22.6	25.7	15.7	18.1	0.000	7.398	0.0	1003.7	1004.4	2.9	169	3.2	25.7	180	9.7	158	06
07	29.8	19.7	25.5	19.8	21.2	0.000	7.139	0.0	1005.0	1005.7	3.2	159	3.2	24.1	158	9.7	158	07
08	36.1	22.3	30.4	17.0	19.7	0.000	12.100	0.0	1006.2	1006.9	1.0	163	1.6	20.9	180	8.0	158	08
09	32.4	22.6	27.2	21.5	22.8	0.000	8.817	0.0	1011.7	1012.4	1.6	134	1.6	17.7	90	6.4	90	09
10	30.6	22.3	26.6	23.5	24.2	0.000	8.220	0.0	1011.9	1012.6	2.0	149	1.6	19.3	180	6.4	135	10
11	30.6	23.2	26.6	22.4	23.3	0.000	8.250	0.0	1011.3	1012.0	1.3	52	1.6	19.3	180	6.4	68	11
12	30.8	20.9	26.6	20.4	21.9	0.000	8.282	0.0	1013.7	1014.5	0.8	113	1.6	19.3	90	4.8	22	12
13	30.5	19.3	26.0	21.7	22.7	0.000	7.639	0.0	1015.1	1015.9	1.2	114	1.6	14.5	90	4.8	90	13
14	31.9	21.7	26.9	21.3	22.6	0.000	8.530	0.0	1014.5	1015.2	1.1	125	1.6	14.5	45	4.8	90	14
15	34.1	20.2	28.4	18.0	20.1	0.000	10.081	0.0	1009.9	1010.6	2.2	179	1.6	19.3	158	8.0	158	15
16	40.7	26.1	32.4	17.5	20.3	0.000	14.065	0.0	1005.2	1005.9	1.8	208	1.6	22.5	135	8.0	158	16
17	32.6	25.3	28.6	19.7	21.6	0.000	10.243	0.0	1005.5	1006.2	2.2	71	3.2	29.0	270	8.0	135	17
18	28.5	21.7	25.2	18.1	19.9	0.000	6.912	0.0	1008.2	1008.9	3.4	30	3.2	22.5	360	8.0	22	18
19	28.2	19.9	24.1	16.4	18.3	0.000	5.769	0.0	1009.2	1009.9	1.8	49	1.6	17.7	112	6.4	90	19
20	28.9	17.0	23.8	16.6	18.4	0.088	5.551	0.0	1010.1	1010.9	0.9	144	1.6	22.5	158	6.4	135	20
21	29.9	19.5	24.8	17.1	19.0	0.000	6.426	0.0	1012.7	1013.4	1.3	46	1.6	17.7	90	6.4	68	21
22	30.6	17.0	25.1	16.2	18.3	0.056	6.850	0.0	1011.7	1012.4	2.5	177	1.6	22.5	158	8.0	158	22
23	30.8	22.4	27.9	18.9	20.9	0.000	9.613	0.0	1008.3	1009.0	2.8	36	3.2	25.7	360	8.0	22	23
24	27.2	19.9	23.5	20.0	20.9	0.000	5.171	16.6	1009.0	1009.8	2.4	52	3.2	19.3	158	8.0	68	24
25	25.6	18.3	21.7	18.8	19.6	0.000	3.359	2.4	1008.8	1009.6	1.3	40	1.6	19.3	45	6.4	45	25
26	26.1	18.8	22.2	19.0	19.8	0.000	3.840	0.0	1005.9	1006.7	2.2	177	1.6	19.3	135	8.0	158	26
27	28.9	19.4	24.2	18.1	19.6	0.000	5.817	8.6	1004.2	1004.9	1.5	143	4.8	30.6	90	11.3	158	27
28	24.2	16.1	19.3	17.1	17.8	0.523	1.461	11.8	1005.6	1006.4	4.0	3	3.2	32.2	45	14.5	22	28
29	23.9	15.9	19.8	14.3	15.9	0.660	2.130	0.0	1006.9	1007.6	4.2	24	4.8	27.4	338	9.7	22	29
30	24.7	12.8	19.7	14.1	15.7	1.299	2.650	0.0	1008.8	1009.6	3.1	183	3.2	22.5	158	8.0	158	30
31	25.7	16.9	21.7	16.9	18.2	0.174	3.567	0.4	1011.2	1011.9	2.6	161	3.2	22.5	158	9.7	135	31
	30.0	20.3	25.5	18.4	20.0	0.840	13.048		1008.5	1009.2	2.2	122.33	2.4	< Monthly Avg				
NUMBER OF DAYS WITH: >		Maximum Temp ≥ 32.2: 6			Minimum Temp ≤ 0: 0			Precipitation ≥ 0.2 mm: 5			Greatest 24 - hr precipitation: 19.6 Date: 27-28							
		Maximum Temp ≤ 0: 0			Minimum Temp ≤ -17.7: 0			Precipitation ≥ 2.0 mm: 3			Monthly Total Precipitation: 39.8							
SEA LEVEL PRESSURE: >		MAXIMUM: 1017.2		DATE: 13	TIME: 13:00		MONTHLY TOTAL		DEGREEE DAYS: >		HEATING: 5.037		SEASON TO DATE TOTAL					
		MINIMUM: 1001.8		DATE: 1	TIME: 13:00		404.500				370.537		1357.129					

**AUGUST 2021
Francavilla al Mare, Abruzzo ITA**

AUGUST 2021

LOCAL CLIMATOLOGICAL DATA

DAVIS INSTRUMENTS, WEATHERLINK NETWORK

**, Abruzzo ITA
Lanciano Eredi Legonziano**



Lat: 42.2266 Long: 14.3454 Elev (ground): 237 meters Time Zone: Europe/Rome

TEMPERATURE °C						DEG DAYS BASE 18.3°		PRECIP. (mm)	PRESSURE (hPa)		WIND SPEED = km/h DIR = DEGREES						Date	
Date	MAXIMUM	MINIMUM	AVERAGE	AVERAGE DEW PT	AVERAGE WET BULB	HEATING	COOLING	WATER EQUIV	AVERAGE STATION	AVERAGE SEA LEVEL	RESULTANT SPEED	RES DIR	AVERAGE SPEED	WIND MAX				
														INSTANT		ARCHIVE		
														SPEED	DIR	SPEED		DIR
01	39.0	25.8	32.7	12.6	16.2	0.000	14.407	0.0	983.2	983.9	0.4	211	1.6	37.0	225	6.4	315	01
02	29.9	20.1	25.7	16.4	18.5	0.000	7.324	0.0	988.5	989.3	1.6	107	1.6	17.7	158	4.8	135	02
03	29.8	17.8	23.9	16.1	18.1	0.002	5.613	0.0	990.4	991.1	0.8	81	0.0	16.1	158	3.2	45	03
04	33.3	20.2	26.5	17.5	19.5	0.000	8.130	0.0	988.1	988.8	1.6	132	1.6	20.9	158	6.4	135	04
05	30.1	22.1	25.9	18.8	20.4	0.000	7.611	0.0	983.8	984.5	2.1	128	1.6	20.9	112	4.8	135	05
06	30.7	17.5	25.2	13.7	16.5	0.032	6.850	0.0	984.5	985.2	1.8	134	1.6	20.9	248	4.8	112	06
07	33.4	20.4	27.3	17.0	19.2	0.000	8.961	0.0	986.0	986.7	2.1	145	1.6	20.9	158	4.8	135	07
08	38.5	21.6	30.4	14.6	17.6	0.000	12.063	0.0	987.4	988.1	1.2	120	1.6	16.1	135	4.8	68	08
09	35.1	23.4	28.8	18.5	20.6	0.000	10.512	0.0	992.6	993.3	0.7	75	0.0	17.7	270	3.2	45	09
10	34.7	22.1	27.8	20.4	21.9	0.000	9.447	0.0	992.7	993.4	1.4	119	1.6	17.7	180	4.8	135	10
11	33.1	21.9	26.8	19.9	21.4	0.000	8.461	0.2	992.1	992.8	1.3	26	0.0	12.9	180	4.8	22	11
12	34.8	21.4	28.1	17.4	19.7	0.000	9.808	0.0	994.7	995.5	1.1	50	1.6	14.5	45	3.2	45	12
13	35.1	22.7	28.4	16.4	19.0	0.000	10.093	0.0	996.1	996.8	0.7	87	1.6	12.9	135	4.8	45	13
14	36.9	20.9	28.8	16.6	19.1	0.000	10.479	0.0	995.4	996.1	0.6	57	1.6	11.3	112	3.2	22	14
15	38.8	21.8	31.1	12.0	15.7	0.000	12.762	0.0	991.1	991.8	1.4	144	1.6	16.1	112	4.8	112	15
16	40.6	23.3	31.8	13.5	16.9	0.000	13.502	0.0	986.6	987.3	1.8	147	1.6	17.7	135	4.8	135	16
17	30.9	21.4	26.4	17.7	19.7	0.000	8.111	0.8	986.2	986.9	1.1	51	1.6	17.7	90	4.8	68	17
18	29.3	20.1	24.3	16.9	18.7	0.000	5.921	0.0	988.9	989.7	2.0	22	1.6	17.7	45	4.8	22	18
19	29.3	19.5	24.0	14.6	17.0	0.000	5.697	0.0	989.8	990.5	1.4	29	1.6	14.5	22	4.8	22	19
20	30.9	17.6	23.8	14.4	16.7	0.069	5.535	0.0	990.8	991.5	0.6	71	0.0	17.7	90	3.2	22	20
21	31.2	18.5	25.0	14.3	16.8	0.000	6.655	0.0	993.3	994.0	1.1	35	1.6	16.1	22	4.8	22	21
22	34.9	18.3	26.9	12.0	15.3	0.000	8.595	0.0	992.7	993.4	1.2	139	1.6	19.3	135	4.8	135	22
23	34.9	22.1	27.6	15.5	18.1	0.000	9.236	0.0	989.2	989.9	1.0	67	1.6	14.5	68	4.8	68	23
24	27.2	18.0	22.0	19.3	20.0	0.019	3.660	32.0	989.5	990.2	1.1	49	0.0	14.5	68	3.2	22	24
25	25.9	17.1	20.7	17.5	18.4	0.234	2.553	1.0	989.6	990.3	0.4	24	1.6	14.5	22	4.8	22	25
26	27.7	17.1	21.0	17.2	18.2	0.289	2.972	3.4	986.5	987.2	0.8	164	0.0	16.1	180	3.2	135	26
27	29.3	17.1	22.6	16.7	18.2	0.046	4.345	17.0	984.9	985.6	1.3	139	1.6	19.3	158	4.8	135	27
28	24.6	15.6	18.6	16.7	17.2	0.870	1.106	13.0	985.7	986.4	1.1	5	0.0	16.1	22	4.8	338	28
29	23.4	15.8	19.0	13.2	14.9	0.766	1.400	0.0	987.3	988.0	2.0	8	1.6	17.7	68	4.8	338	29
30	26.9	13.4	20.0	12.3	14.4	1.313	2.970	0.0	989.4	990.1	1.4	152	1.6	16.1	112	4.8	135	30
31	27.2	15.7	21.4	15.4	17.0	0.551	3.618	6.4	991.8	992.5	1.0	119	1.6	16.1	135	3.2	180	31
	31.9	19.7	25.6	16.0	18.1	0.686	13.262		989.3	990.0	1.2	91.53	1.6	< Monthly Avg				

NUMBER OF DAYS WITH: > Maximum Temp ≥ 32.2: 14 Minimum Temp ≤ 0: 0 Precipitation ≥ 0.2 mm: 7 Greatest 24 - hr precipitation: 32.0 Date: 23-24
 Maximum Temp ≤ 0: 0 Minimum Temp ≤ -17.7: 0 Precipitation ≥ 2.0 mm: 5 Monthly Total Precipitation: 73.8

SEA LEVEL PRESSURE: > MAXIMUM: 1002.5 DATE: 14 TIME: 08:00 MONTHLY TOTAL: 7.546 SEASON TO DATE TOTAL: 438.600
 MINIMUM: 981.4 DATE: 1 TIME: 13:00 DEGREE DAYS: > HEATING: 411.112 COOLING: 1502.237

**AUGUST 2021
, Abruzzo ITA**

AUGUST 2021

LOCAL CLIMATOLOGICAL DATA

DAVIS INSTRUMENTS, WEATHERLINK NETWORK

**, Abruzzo ITA
Vasto Del Borrello**

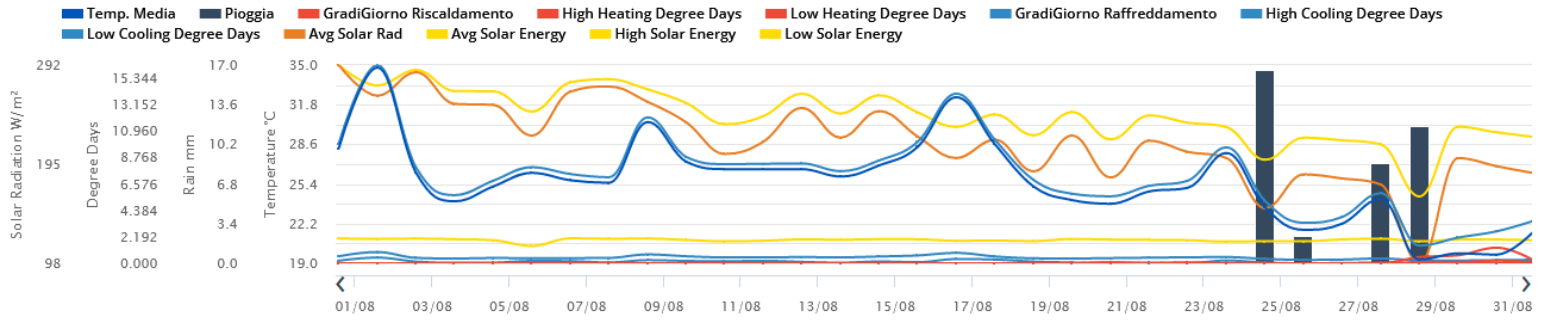


Lat: 42.1726 Long: 14.6826 Elev (ground): 39 meters Time Zone: Europe/Rome

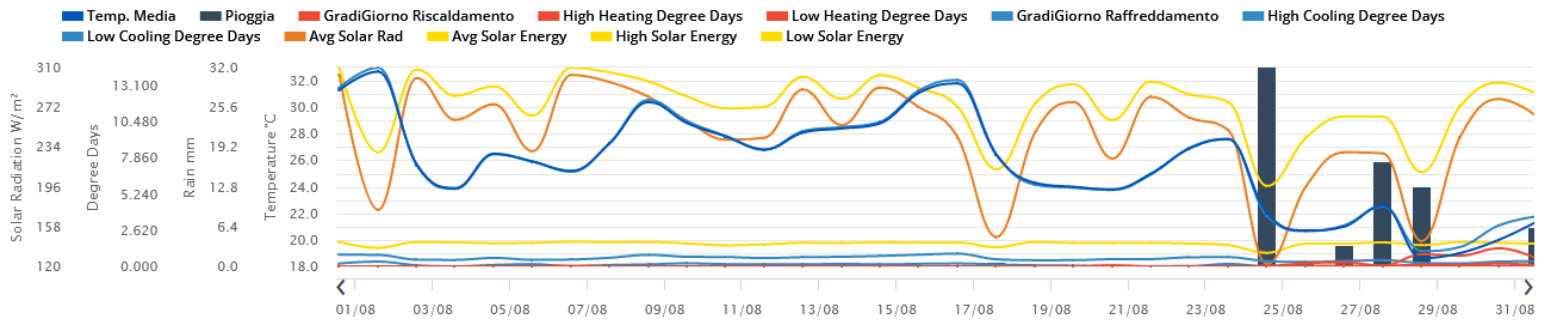
TEMPERATURE °C						DEG DAYS BASE 18.3°		PRECIP. (mm)	PRESSURE (hPa)		WIND SPEED = km/h DIR = DEGREES																			
Date	MAXIMUM	MINIMUM	AVERAGE	AVERAGE DEW PT	AVERAGE WET BULB	HEATING	COOLING	WATER EQUIV	AVERAGE STATION	AVERAGE SEA LEVEL	RESULTANT SPEED	RES DIR	AVERAGE SPEED	WIND MAX				Date												
														INSTANT		ARCHIVE														
														SPEED	DIR	SPEED	DIR													
01	40.9	26.4	34.0	15.6	18.9	0.000	15.627	0.0	1003.2	1003.9	7.1	242	6.4	33.8	248	14.5	248	01												
02	30.1	22.1	26.9	18.6	20.5	0.000	8.616	0.0	1009.1	1009.8	3.8	85	3.2	22.5	68	9.7	90	02												
03	29.1	20.0	24.7	18.9	20.3	0.000	6.345	0.0	1011.1	1011.8	1.1	96	1.6	17.7	68	6.4	68	03												
04	31.1	20.3	26.5	20.7	22.0	0.000	8.137	0.0	1008.3	1009.0	2.4	148	3.2	25.7	248	8.0	135	04												
05	30.1	21.7	27.2	20.5	22.0	0.000	8.826	0.0	1004.2	1004.9	2.2	127	4.8	29.0	248	8.0	270	05												
06	29.8	18.3	24.7	16.1	18.2	0.000	6.382	0.0	1005.1	1005.8	2.2	119	3.2	20.9	112	9.7	90	06												
07	31.6	20.2	26.5	19.7	21.3	0.000	8.169	0.0	1006.2	1006.9	3.0	157	3.2	24.1	158	9.7	135	07												
08	35.1	21.2	28.9	19.1	21.1	0.000	10.530	0.0	1007.3	1008.1	1.5	69	1.6	20.9	45	8.0	90	08												
09	33.1	23.4	27.6	21.8	23.1	0.000	9.301	0.0	1012.8	1013.5	1.3	52	1.6	19.3	45	8.0	68	09												
10	32.5	22.3	27.2	23.1	24.0	0.000	8.898	0.0	1013.2	1013.9	1.6	93	1.6	19.3	90	8.0	112	10												
11	31.2	23.1	26.8	22.7	23.7	0.000	8.451	0.6	1012.3	1013.0	1.5	2	1.6	20.9	22	6.4	45	11												
12	31.7	22.4	27.2	20.6	22.2	0.000	8.852	0.0	1014.9	1015.6	1.3	350	1.6	17.7	45	4.8	45	12												
13	31.4	21.9	26.6	21.0	22.3	0.000	8.243	0.0	1016.2	1017.0	0.9	36	1.6	17.7	90	4.8	45	13												
14	31.5	22.6	27.0	20.9	22.3	0.000	8.648	0.0	1015.6	1016.3	0.9	14	1.6	14.5	68	4.8	45	14												
15	35.4	20.8	28.6	17.7	20.0	0.000	10.278	0.0	1011.3	1012.0	2.1	163	3.2	19.3	135	6.4	135	15												
16	35.4	23.2	30.4	18.8	21.1	0.000	12.081	0.0	1006.6	1007.3	1.3	226	3.2	24.1	248	9.7	270	16												
17	31.4	24.2	28.0	19.8	21.6	0.000	9.671	0.0	1006.4	1007.2	1.9	38	3.2	20.9	68	9.7	68	17												
18	29.7	22.2	25.6	19.2	20.8	0.000	7.264	0.0	1009.0	1009.8	2.0	354	1.6	20.9	45	6.4	45	18												
19	28.5	21.0	25.1	17.0	19.0	0.000	6.764	0.0	1010.3	1011.0	2.0	3	3.2	19.3	45	8.0	45	19												
20	29.2	19.5	24.3	16.6	18.6	0.000	5.958	0.0	1011.1	1011.8	1.2	9	1.6	17.7	45	6.4	45	20												
21	30.3	19.8	25.0	17.2	19.1	0.000	6.662	0.0	1013.7	1014.4	1.5	6	1.6	20.9	68	6.4	45	21												
22	32.6	19.3	25.8	15.8	18.2	0.000	7.481	0.0	1013.0	1013.7	1.5	163	3.2	19.3	158	6.4	90	22												
23	31.3	21.2	27.1	19.6	21.4	0.000	8.759	0.0	1009.3	1010.0	1.8	36	3.2	27.4	68	9.7	45	23												
24	27.9	19.6	24.1	20.5	21.4	0.000	5.815	21.0	1009.6	1010.3	2.3	43	1.6	22.5	338	8.0	45	24												
25	26.1	17.8	21.5	18.8	19.5	0.037	3.213	3.0	1010.1	1010.9	1.2	328	1.6	20.9	68	6.4	45	25												
26	27.4	17.7	22.1	18.5	19.4	0.028	3.764	0.0	1007.1	1007.8	1.1	171	1.6	17.7	68	6.4	90	26												
27	29.3	17.6	23.7	18.2	19.5	0.030	5.359	1.8	1005.5	1006.2	1.8	91	3.2	30.6	68	11.3	45	27												
28	26.3	17.1	20.7	18.1	18.8	0.289	2.616	16.4	1005.3	1006.1	1.6	344	1.6	22.5	45	6.4	45	28												
29	24.6	16.8	20.2	15.0	16.5	0.359	2.266	0.0	1007.6	1008.3	2.6	330	3.2	27.4	22	8.0	45	29												
30	26.1	15.6	21.0	14.2	16.1	0.581	3.236	0.0	1010.4	1011.1	1.5	140	3.2	20.9	68	8.0	90	30												
31	27.5	15.8	22.1	17.3	18.6	0.380	4.174	2.8	1012.3	1013.1	0.9	91	1.6	17.7	45	6.4	68	31												
													30.6	20.5	25.7	18.8	20.4	0.438	13.377		1009.6	1010.3	1.9	133.11	2.5	< Monthly Avg				
NUMBER OF DAYS WITH:		>		Maximum Temp ≥ 32.2: 7 Maximum Temp ≤ 0: 0			Minimum Temp ≤ 0: 0 Minimum Temp ≤ -17.7: 0			Precipitation ≥ 0.2 mm: 6 Precipitation ≥ 2.0 mm: 4			Greatest 24 - hr precipitation: 21.2 Date: 23-24 Monthly Total Precipitation: 45.6																	
SEA LEVEL PRESSURE:		>		MAXIMUM: 1018.8 MINIMUM: 997.8		DATE 13 28		TIME 12:00 17:00		DEGREEE DAYS: >		HEATING: 3.067 COOLING: 414.696		MONTHLY TOTAL		SEASON TO DATE TOTAL		316.046 1442.692												

**AUGUST 2021
, Abruzzo ITA**

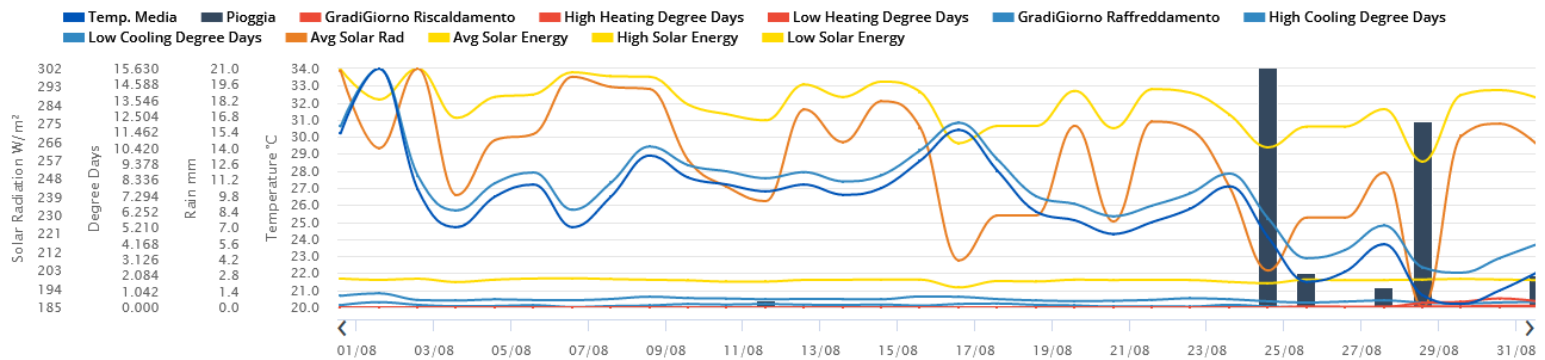
Francoavilla



Lanciano



Vasto





AGROFENOLOGIA

(VITE)

Per quanto riguarda la fase fenologica, nel mese di agosto per le varietà precoci la vendemmia è già iniziata e si avvia anche alla conclusione. Per il Pecorino sono iniziate le fasi di raccolta mentre per il Montepulciano si è ancora nella fase di invaiatura, seppur quasi completata (BBCH 83-85). Nel mese le manifestazioni di stress idrico osservate sono state diffuse e talvolta drastiche. Le conseguenze di ciò sono riscontrabili facilmente in un accrescimento ridotto dei grappoli.

OPERAZIONI AGRONOMICHE E INTERVENTI FITOSANITARI SUGGERITI

Peronospora: non si osservano criticità.

Oidio: sono stati rilevati danni di entità ridotta e non diffusa.

Mal dell'esca: si segnalano osservazioni di sintomi di mal dell'esca.

Tignoletta: le catture, soprattutto in costa, sono state elevate per cui è opportuno valutare la possibilità di interventi con prodotti a base di *Bacillus thuringiensis* o spinosad.

Botrite. Le condizioni meteorologiche registrate, in particolare l'assenza di precipitazioni e le temperature molto elevate, hanno determinato il verificarsi di condizioni sfavorevoli al patogeno. Al momento non si consigliano interventi ma si invita a valutare l'evolversi della situazione sulla base delle condizioni meteo. A questo proposito si suggerisce di richiedere l'accesso ai dati in tempo reale delle stazioni meteo per disporre di dati certi e aggiornati per la previsione delle fitopatie e la programmazione degli interventi.



Agire Soc. Cons. a r.l.
P.Iva 01776590679
Via Isidoro e Lepido Facii snc - 64100 Sant'Atto - Teramo
info@poloagire.it; - Tel.: +39 0861 232435
www.poloagire.it