



BOLLETTINO AGROMETEOROLOGICO

Dicembre 2021



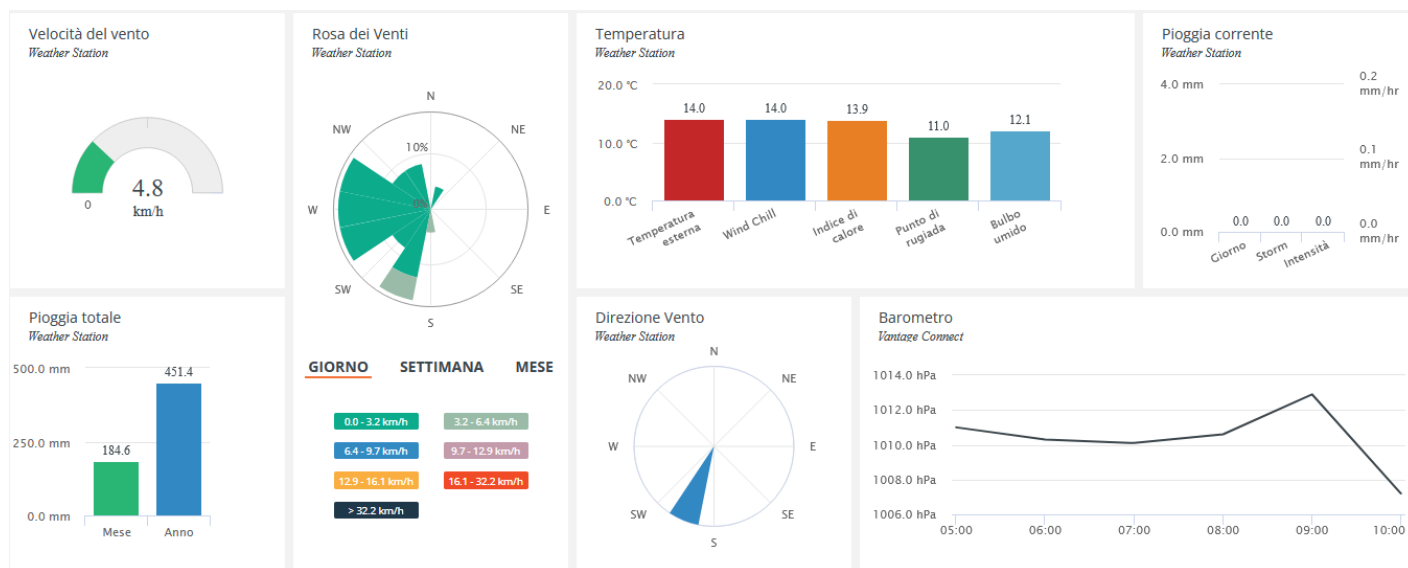
Fondo europeo agricolo per lo sviluppo rurale:
l'Europa investe nelle zone rurali





I bollettini Agrometeorologici vengono pubblicati con cadenza mensile sulla base delle informazioni raccolte in relazione a tre stazioni meteo installate nei pressi di Francavilla al Mare (CH), Vasto (CH) e Spaccarelli (CH).

Per avere accesso ai dati in tempo reale scrivici a questo indirizzo: info@poloagire.it



DECEMBER 2021

LOCAL CLIMATOLOGICAL DATA

DAVIS INSTRUMENTS, WEATHERLINK NETWORK

Francavilla al Mare, Abruzzo ITA

Francavilla Galasso



Lat: 42.4270 Long: 14.2602 Elev (ground): 54 meters Time Zone: Europe/Rome

TEMPERATURE °C						DEG DAYS BASE 18.3°		PRECIP. (mm)	PRESSURE (hPa)		WIND SPEED = km/h DIR = DEGREES							
Date	MAXIMUM	MINIMUM	AVERAGE	AVERAGE DEW PT	AVERAGE WET BULB	HEATING	COOLING	WATER EQUIV	AVERAGE STATION	AVERAGE SEA LEVEL	RESULTANT SPEED	RES DIR	AVERAGE SPEED	WIND MAX				Date
														INSTANT		ARCHIVE		
														SPEED	DIR	SPEED	DIR	
01	17.1	8.9	12.9	3.7	7.3	5.426	0.000	0.0	1008.0	1008.7	3.9	244	3.2	29.0	338	6.4	225	01
02	16.9	9.9	13.2	7.8	9.8	5.111	0.000	0.2	996.1	996.9	1.8	251	3.2	22.5	338	11.3	22	02
03	11.3	8.1	9.5	7.1	8.1	8.812	0.000	0.2	1002.6	1003.3	5.5	356	4.8	29.0	360	11.3	22	03
04	14.4	3.8	8.6	3.9	5.9	9.759	0.000	0.0	1005.7	1006.4	1.2	283	3.2	20.9	360	8.0	338	04
05	18.1	5.7	12.8	6.5	8.8	5.542	0.000	0.2	997.1	997.8	2.0	318	4.8	33.8	360	11.3	22	05
06	8.4	5.1	7.2	4.4	5.7	11.155	0.000	0.0	1000.6	1001.4	9.7	359	9.7	30.6	360	16.1	360	06
07	9.6	2.2	6.8	0.9	3.7	11.516	0.000	0.2	1006.7	1007.4	8.0	358	8.0	32.2	338	12.9	360	07
08	11.8	-0.2	6.6	1.5	3.9	11.771	0.000	0.0	1001.6	1002.3	2.8	223	1.6	14.5	158	6.4	225	08
09	12.3	4.9	9.7	4.8	6.9	8.644	0.000	0.2	996.5	997.2	2.8	329	3.2	24.1	360	6.4	338	09
10	12.1	1.2	6.6	3.0	4.6	11.690	0.000	0.0	997.1	997.8	1.6	233	1.6	17.7	248	4.8	225	10
11	10.4	2.8	6.3	4.3	5.2	12.030	0.000	0.2	995.2	995.9	7.7	357	9.7	43.5	338	19.3	338	11
12	9.3	5.4	7.3	2.8	4.9	11.000	0.000	0.0	1014.6	1015.3	11.9	356	11.3	37.0	360	17.7	360	12
13	12.4	3.8	8.8	-0.9	3.5	9.565	0.000	0.2	1019.5	1020.2	3.9	347	3.2	25.7	22	9.7	360	13
14	13.4	4.5	9.6	4.6	6.8	8.759	0.000	0.0	1020.1	1020.9	4.9	359	4.8	24.1	338	11.3	22	14
15	12.7	7.4	10.0	6.5	8.0	8.359	0.000	0.2	1021.9	1022.6	5.9	357	4.8	29.0	360	11.3	360	15
16	11.4	7.8	9.9	5.6	7.5	8.451	0.000	0.0	1023.4	1024.2	8.7	357	8.0	29.0	22	12.9	360	16
17	12.7	4.5	9.1	5.3	7.0	9.238	0.000	0.2	1024.7	1025.4	5.0	348	4.8	27.4	360	11.3	22	17
18	10.7	4.5	8.0	2.5	5.1	10.303	0.000	0.0	1025.5	1026.2	2.7	2	4.8	25.7	112	9.7	360	18
19	13.9	2.9	7.2	1.9	4.3	11.116	0.000	0.2	1018.3	1019.0	1.2	334	1.6	17.7	338	8.0	338	19
20	12.1	3.9	8.6	4.5	6.3	9.766	0.000	0.0	1012.6	1013.3	1.0	9	0.0	12.9	22	4.8	22	20
21	10.7	7.2	8.8	5.7	7.1	9.509	0.000	0.0	1017.8	1018.6	0.7	185	0.0	11.3	135	3.2	135	21
22	9.6	4.2	7.6	5.6	6.5	10.701	0.000	0.2	1019.0	1019.7	2.3	359	1.6	14.5	338	6.4	22	22
23	9.6	1.4	6.2	4.8	5.4	12.160	0.000	0.0	1017.9	1018.7	0.6	199	0.0	11.3	158	3.2	225	23
24	16.8	6.3	14.8	7.1	9.9	3.558	0.000	0.2	1010.3	1011.0	4.3	264	4.8	29.0	315	6.4	248	24
25	18.2	14.6	16.5	8.4	11.2	1.806	0.000	0.0	1003.9	1004.7	2.0	284	1.6	29.0	225	6.4	292	25
26	16.3	9.9	11.7	9.7	10.5	6.676	0.000	0.0	1002.5	1003.3	3.9	20	3.2	24.1	360	9.7	22	26
27	11.4	8.0	10.0	9.2	9.5	8.352	0.000	0.2	1004.3	1005.0	0.3	40	1.6	22.5	360	8.0	360	27
28	11.5	6.1	9.2	8.4	8.7	9.162	0.000	0.0	1003.7	1004.4	1.2	24	0.0	14.5	360	6.4	22	28
29	9.9	7.5	8.8	8.2	8.5	9.525	0.000	0.0	1005.3	1006.1	2.5	22	1.6	20.9	22	11.3	22	29
30	11.9	5.3	8.2	7.5	7.8	10.086	0.000	0.2	1015.1	1015.8	2.3	25	1.6	19.3	45	6.4	22	30
31	8.7	2.6	5.8	5.5	5.6	12.546	0.000	0.0	1020.2	1020.9	0.4	119	0.0	11.3	135	3.2	135	31
	12.4	5.5	9.2	5.2	6.9	16.380	0.000		1009.9	1010.7	3.6	236.20	4.3	< Monthly Avg				
NUMBER OF DAYS WITH: >		Maximum Temp ≥ 32.2: 0		Minimum Temp ≤ 0: 1		Precipitation ≥ 0.2 mm: 0		Greatest 24 - hr precipitation: 0.2 Date: 1-2										
		Maximum Temp ≤ 0: 0		Minimum Temp ≤ -17.7: 0		Precipitation ≥ 2.0 mm: 0		Monthly Total Precipitation: 2.8										
SEA LEVEL PRESSURE: >		MAXIMUM: 1028.3		DATE: 18		TIME: 11:00		MONTHLY TOTAL		SEASON TO DATE TOTAL								
		MINIMUM: 988.6		DATE: 11		TIME: 02:00		DEGREEE DAYS: >		HEATING: 507.771		1387.287						
										COOLING: 0.000		0.258						

DECEMBER 2021
Francavilla al Mare, Abruzzo ITA

DECEMBER 2021 LOCAL CLIMATOLOGICAL DATA

DAVIS INSTRUMENTS, WEATHERLINK NETWORK

, Abruzzo ITA Lanciano Eredi Legonziano



Lat: 42.2266 Long: 14.3454 Elev (ground): 237 meters Time Zone: Europe/Rome

TEMPERATURE °C						DEG DAYS BASE 18.3°		PRECIP. (mm)	PRESSURE (hPa)		WIND SPEED = km/h DIR = DEGREES						Date	
Date	MAXIMUM	MINIMUM	AVERAGE	AVERAGE DEW PT	AVERAGE WET BULB	HEATING	COOLING	WATER EQUIV	AVERAGE STATION	AVERAGE SEA LEVEL	RESULTANT SPEED	RES DIR	AVERAGE SPEED	WIND MAX				
														INSTANT		ARCHIVE		
														SPEED	DIR	SPEED		DIR
01	14.8	1.8	7.9	-1.0	2.9	10.398	0.000	0.2	988.7	989.4	2.4	175	1.6	14.5	158	4.8	180	01
02	16.6	8.4	11.1	6.8	8.5	7.208	0.000	0.2	976.6	977.3	2.1	186	1.6	30.6	180	6.4	180	02
03	10.4	7.1	8.3	6.3	7.2	10.019	0.000	0.0	982.4	983.1	2.0	346	1.6	16.1	45	4.8	22	03
04	10.7	3.7	7.5	3.0	5.1	10.801	0.000	0.2	985.8	986.5	1.1	188	1.6	12.9	248	3.2	338	04
05	16.7	5.9	10.9	6.7	8.3	7.456	0.000	0.2	977.6	978.3	2.1	147	1.6	16.1	180	4.8	158	05
06	6.8	4.4	5.6	4.0	4.8	12.720	0.000	0.2	980.3	981.0	3.1	340	3.2	17.7	360	6.4	338	06
07	8.7	3.8	6.3	-0.4	2.8	12.060	0.000	0.0	986.2	986.9	4.0	349	3.2	24.1	360	8.0	360	07
08	13.2	1.6	7.6	0.7	3.9	10.738	0.000	0.2	981.9	982.6	2.0	168	1.6	24.1	158	6.4	180	08
09	11.7	4.6	8.4	4.6	6.3	9.961	0.000	0.2	976.5	977.3	1.1	136	1.6	22.5	270	4.8	22	09
10	9.0	1.8	5.6	2.7	4.1	12.692	0.000	0.2	977.1	977.8	2.0	172	1.6	20.9	180	6.4	158	10
11	7.8	2.8	5.2	3.4	4.3	13.116	0.000	0.2	975.1	975.9	2.8	326	3.2	22.5	292	6.4	338	11
12	8.8	5.0	6.4	2.1	4.2	11.898	0.000	0.4	994.1	994.8	4.9	335	4.8	20.9	292	6.4	338	12
13	12.5	4.1	9.2	-3.2	2.2	9.183	0.000	0.2	999.0	999.7	1.9	5	1.6	16.1	22	4.8	22	13
14	13.0	8.1	10.0	3.9	6.5	8.380	0.000	0.4	999.7	1000.4	2.6	358	1.6	20.9	45	6.4	22	14
15	12.0	8.1	9.6	6.0	7.5	8.762	0.000	0.2	1001.4	1002.2	2.1	356	1.6	16.1	45	4.8	22	15
16	10.1	7.8	8.8	4.6	6.5	9.581	0.000	0.2	1003.0	1003.8	2.2	354	1.6	14.5	338	4.8	338	16
17	12.2	7.6	9.3	4.5	6.6	9.060	0.000	0.2	1004.2	1004.9	2.8	3	1.6	20.9	22	6.4	22	17
18	9.4	4.9	7.7	2.0	4.6	10.644	0.000	0.2	1004.9	1005.6	2.3	13	1.6	17.7	45	6.4	338	18
19	14.9	2.8	7.9	0.2	3.5	10.394	0.000	0.2	997.9	998.6	0.1	59	1.6	12.9	338	3.2	338	19
20	13.7	2.8	7.9	3.4	5.4	10.440	0.000	0.2	992.3	993.0	1.1	158	1.6	11.3	180	3.2	180	20
21	10.3	6.7	8.1	4.6	6.2	10.204	0.000	0.2	997.5	998.2	1.1	164	0.0	9.7	180	3.2	135	21
22	9.1	5.1	7.0	4.1	5.5	11.352	0.000	0.2	998.5	999.3	0.7	154	0.0	9.7	270	3.2	180	22
23	12.0	2.3	6.5	4.1	5.2	11.826	0.000	0.2	997.5	998.2	2.0	186	1.6	12.9	135	4.8	180	23
24	16.9	5.2	10.6	4.3	6.8	7.750	0.000	0.0	991.0	991.7	2.9	172	1.6	17.7	158	4.8	180	24
25	15.8	10.2	13.7	7.7	9.9	4.627	0.000	0.2	984.5	985.3	3.2	156	3.2	29.0	158	8.0	180	25
26	13.2	9.3	11.0	9.4	10.1	7.315	0.000	0.2	982.7	983.4	1.0	153	0.0	11.3	158	3.2	158	26
27	13.3	8.1	10.1	9.0	9.5	8.229	0.000	0.2	984.1	984.9	1.2	136	0.0	12.9	158	4.8	135	27
28	13.0	7.1	9.7	8.4	8.9	8.655	0.000	0.2	983.7	984.4	0.6	154	0.0	11.3	158	3.2	22	28
29	10.9	7.4	9.0	7.4	8.1	9.285	0.000	0.2	985.2	985.9	1.1	182	0.0	12.9	202	4.8	180	29
30	12.7	3.5	7.9	6.4	7.1	10.417	0.000	0.2	994.7	995.4	0.4	76	0.0	12.9	22	3.2	22	30
31	16.4	4.8	9.1	6.2	7.4	9.188	0.000	0.2	999.5	1000.3	1.3	163	0.0	9.7	180	3.2	180	31
	12.2	5.4	8.5	4.3	6.1	17.672	0.000		989.8	990.5	1.9	189.35	2.0	< Monthly Avg				
NUMBER OF DAYS WITH: >		Maximum Temp ≥ 32.2: 0 Maximum Temp ≤ 0: 0			Minimum Temp ≤ 0: 0 Minimum Temp ≤ -17.7: 0			Precipitation ≥ 0.2 mm: 2 Precipitation ≥ 2.0 mm: 0			Greatest 24 - hr precipitation: 0.4 Date: 0-1 Monthly Total Precipitation: 6.0							
SEA LEVEL PRESSURE: >		MAXIMUM: 1007.5 MINIMUM: 968.4		DATE 18 10:00 11 04:00		DEGREE DAYS: >		HEATING: 547.842 COOLING: 0.000		MONTHLY TOTAL 1522.417 0.112		SEASON TO DATE TOTAL						

DECEMBER 2021
, Abruzzo ITA

DECEMBER 2021

LOCAL CLIMATOLOGICAL DATA

DAVIS INSTRUMENTS, WEATHERLINK NETWORK

, Abruzzo ITA
Vasto Del Borrello

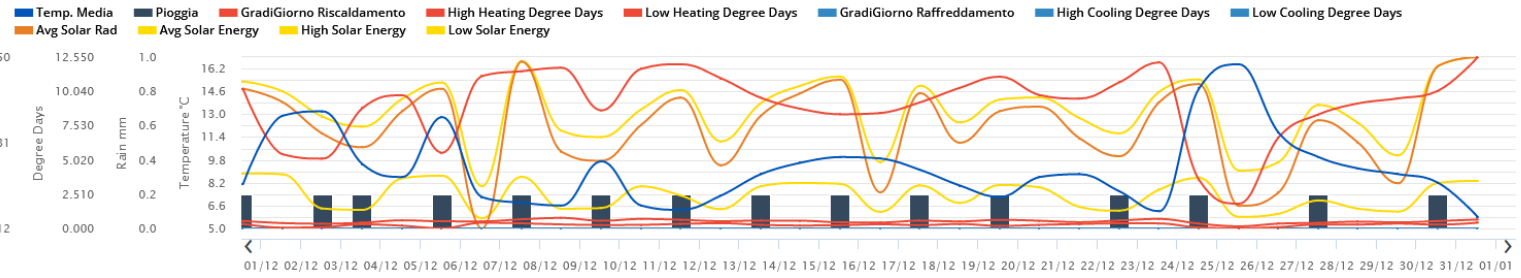


Lat: 42.1726 Long: 14.6826 Elev (ground): 39 meters Time Zone: Europe/Rome

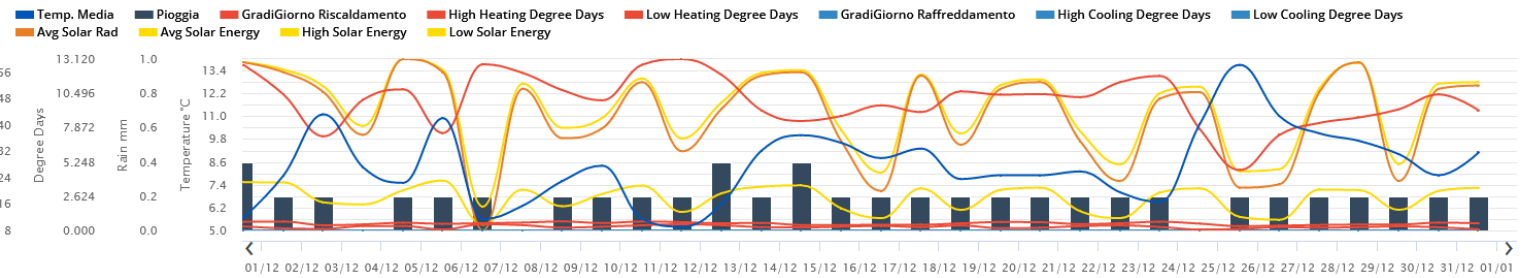
TEMPERATURE °C						DEG DAYS BASE 18.3°		PRECIP. (mm)	PRESSURE (hPa)		WIND SPEED = km/h DIR = DEGREES							
Date	MAXIMUM	MINIMUM	AVERAGE	AVERAGE DEW PT	AVERAGE WET BULB	HEATING	COOLING	WATER EQUIV	AVERAGE STATION	AVERAGE SEA LEVEL	RESULTANT SPEED	RES DIR	AVERAGE SPEED	WIND MAX				Date
														INSTANT		ARCHIVE		
														SPEED	DIR	SPEED	DIR	
01	14.3	1.9	8.8	2.2	5.1	9.488	0.000	0.0	1009.8	1010.5	2.2	233	1.6	22.5	248	6.4	248	01
02	17.5	10.3	13.8	8.3	10.3	4.523	0.000	2.2	997.5	998.2	8.2	236	8.0	45.1	248	16.1	248	02
03	12.6	8.1	10.4	7.9	9.0	7.954	0.000	1.8	1003.0	1003.8	2.6	317	1.6	25.7	45	4.8	315	03
04	11.8	5.5	8.6	4.4	6.3	9.720	0.000	0.2	1007.0	1007.8	1.5	253	1.6	14.5	315	4.8	202	04
05	19.5	8.2	13.2	8.0	9.9	5.201	0.025	0.0	998.5	999.2	0.4	19	4.8	35.4	45	14.5	45	05
06	8.4	5.9	6.8	5.6	6.2	11.507	0.000	61.6	1000.8	1001.5	3.4	308	3.2	22.5	292	4.8	292	06
07	10.8	5.1	7.9	2.3	4.9	10.419	0.000	0.0	1007.0	1007.7	5.2	314	4.8	30.6	315	8.0	315	07
08	14.9	3.8	9.0	3.4	5.9	9.299	0.000	4.0	1003.2	1003.9	5.8	208	6.4	37.0	180	14.5	225	08
09	13.6	7.0	10.4	5.9	7.8	7.928	0.000	0.2	997.4	998.1	3.1	248	3.2	33.8	270	16.1	248	09
10	11.2	3.9	8.0	4.5	6.0	10.380	0.000	1.0	998.3	999.1	4.5	204	4.8	43.5	180	17.7	180	10
11	10.9	3.7	8.1	5.2	6.5	10.227	0.000	3.2	995.5	996.3	3.3	26	6.4	48.3	45	22.5	45	11
12	10.8	5.8	7.6	4.3	5.8	10.764	0.000	14.4	1014.7	1015.4	4.6	347	4.8	48.3	45	22.5	45	12
13	13.2	6.4	9.9	1.7	5.3	8.470	0.000	0.0	1020.1	1020.8	3.0	314	1.6	20.9	360	4.8	315	13
14	13.8	9.3	11.0	6.6	8.4	7.373	0.000	0.0	1020.5	1021.3	3.5	318	3.2	20.9	315	4.8	338	14
15	12.8	9.6	10.9	7.8	9.1	7.396	0.000	0.0	1022.4	1023.1	3.2	315	3.2	17.7	45	4.8	315	15
16	11.3	9.3	10.1	6.8	8.3	8.194	0.000	0.0	1024.0	1024.8	4.1	317	3.2	25.7	315	4.8	315	16
17	13.7	7.8	10.2	6.3	8.0	8.183	0.000	0.0	1025.3	1026.0	3.3	316	3.2	20.9	22	4.8	315	17
18	11.7	7.0	9.6	2.9	5.8	8.745	0.000	0.0	1026.0	1026.7	8.4	53	9.7	46.7	90	22.5	68	18
19	13.0	5.2	8.5	2.3	5.0	9.877	0.000	0.0	1019.2	1020.0	1.6	304	1.6	17.7	270	4.8	315	19
20	13.8	2.6	8.6	4.9	6.5	9.694	0.000	0.0	1013.6	1014.3	1.7	268	1.6	11.3	248	4.8	248	20
21	11.8	7.3	9.1	5.4	7.1	9.188	0.000	0.4	1019.1	1019.9	3.7	186	3.2	19.3	180	9.7	158	21
22	10.4	4.2	7.9	5.1	6.4	10.396	0.000	0.0	1020.0	1020.8	1.4	278	1.6	14.5	270	3.2	225	22
23	11.0	4.7	7.7	5.7	6.6	10.588	0.000	0.0	1019.1	1019.9	1.4	231	1.6	14.5	180	6.4	202	23
24	15.9	5.2	11.6	6.1	8.3	6.766	0.000	0.0	1012.1	1012.9	3.7	250	4.8	25.7	270	12.9	270	24
25	16.8	15.1	16.2	9.1	11.6	2.106	0.000	0.0	1005.1	1005.9	15.8	251	14.5	51.5	270	24.1	248	25
26	16.7	10.9	12.7	10.4	11.3	5.657	0.000	2.2	1003.4	1004.2	1.9	269	1.6	32.2	248	16.1	248	26
27	12.8	8.1	10.6	9.6	10.0	7.750	0.000	0.2	1005.2	1005.9	0.4	164	1.6	14.5	112	6.4	135	27
28	14.2	7.7	10.3	9.2	9.7	8.042	0.000	0.0	1004.8	1005.6	1.1	265	0.0	9.7	270	4.8	248	28
29	13.3	6.2	9.8	8.3	9.0	8.505	0.000	0.0	1006.1	1006.8	1.6	278	1.6	16.1	270	4.8	248	29
30	13.3	4.9	9.1	8.0	8.4	9.245	0.000	0.0	1015.7	1016.5	1.9	290	1.6	14.5	292	4.8	248	30
31	11.0	4.3	7.1	6.5	6.8	11.218	0.000	0.2	1021.4	1022.1	0.7	179	1.6	11.3	135	4.8	135	31
	13.1	6.6	9.8	6.0	7.6	15.376	0.046		1010.8	1011.6	3.5	243.75	3.8	< Monthly Avg				
NUMBER OF DAYS WITH: >		Maximum Temp ≥ 32.2: 0			Minimum Temp ≤ 0: 0			Precipitation ≥ 0.2 mm: 9			Greatest 24 - hr precipitation: 61.6 Date: 5-6							
		Maximum Temp ≤ 0: 0			Minimum Temp ≤ -17.7: 0			Precipitation ≥ 2.0 mm: 4			Monthly Total Precipitation: 91.6							
SEA LEVEL PRESSURE: >		MAXIMUM: 1029.4		DATE: 18		TIME: 10:00		MONTHLY TOTAL		HEATING: 476.646		SEASON TO DATE TOTAL						
		MINIMUM: 989.0		DATE: 11		TIME: 02:00		DEGREEE DAYS: >		COOLING: 0.046		1256.842						
												0.258						

DECEMBER 2021
, Abruzzo ITA

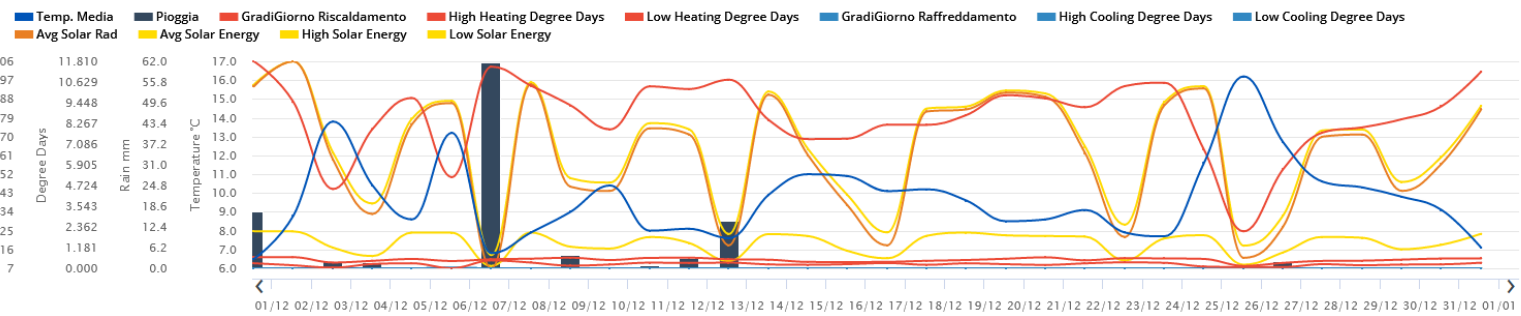
Francavilla



Lanciano



Vasto





AGROFENOLOGIA

(VITE)

Permane la fase di riposo vegetativo. Piante a riposo. Nel corso del mese di dicembre si sono registrati alcuni eventi piovosi di media intensità.

OPERAZIONI AGRONOMICHE E INTERVENTI FITOSANITARI SUGGERITI

In questa fase è possibile avviare le operazioni di potatura secca, attività da realizzare dopo la caduta delle foglie. La potatura può essere effettuata adottando tecniche diverse, potatura lunga, potatura mista (sperone e tralcio rinnovabile) o una potatura corta (sperone su cordone permanente). Obiettivo è quello di determinare la qualità e la quantità delle uve prodotte. Riducendo il numero di grappoli, infatti, è possibile ottenere benefici in termini di migliore qualità delle uve, grappoli di dimensioni maggiori, maggiore costanza della produzione, più rapida messa a frutto. La quota di legno prodotto nell'anno asportato può essere ingente: 80-95%.

Data la delicatezza dell'operazione e l'impossibilità di fornire indicazioni specifiche valide a livello generale, invitiamo a richiedere un parere ai tecnici aziendali in merito al carico gemmale ottimale.

La potatura invernale, o secca, rappresenta anche un utile strumento di prevenzione per alcune fitopatie. Asportando, infatti, i tralci che presentano alcuni segni distintivi, è possibile prevenire lo sviluppo della malattia nei prossimi mesi. A titolo esemplificativo, virosi (tralci schiacciati, biforcati, fasciati, con internodi irregolari), oidio (macchie violacee-rossastre), botrite (tacche scuro-nerastre), escoriosi (zone decolorate biancastre con puntini neri soprattutto in prossimità delle gemme e fessurazioni della corteccia), mal dell'esca (viti parzialmente o totalmente disseccate, già individuate in estate e opportunamente segnate).



Agire Soc. Cons. a r.l.
P.Iva 01776590679
Via Isidoro e Lepido Facii snc - 64100 Sant'Atto - Teramo
info@poloagire.it; - Tel.: +39 0861 232435
www.poloagire.it