



# BOLLETTINO AGROMETEOROLOGICO

Gennaio 2022



Fondo europeo agricolo per lo sviluppo rurale:  
l'Europa investe nelle zone rurali



PSR 2014-2020  
ABRUZZO

REGIONE  
ABRUZZO



Progetto "VIN.CO" – PSR Abruzzo 2014-2020 - Misura M16 – COOPERAZIONE –  
Sottomisura 16.2 - "Sostegno a progetti pilota e allo sviluppo di nuovi prodotti, pratiche, processi e tecnologie" – "Selezione dei Progetti di Macrofiliera"

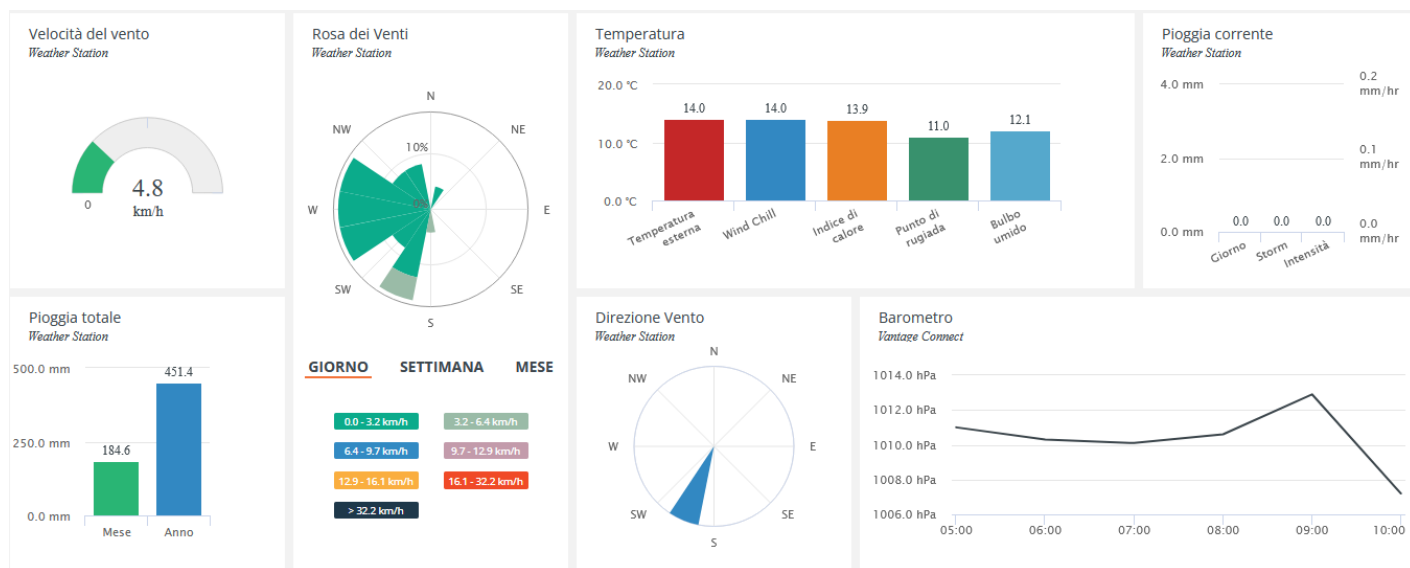
Filiera VITIVINICOLA

CODICE CUP: C74I19000000009

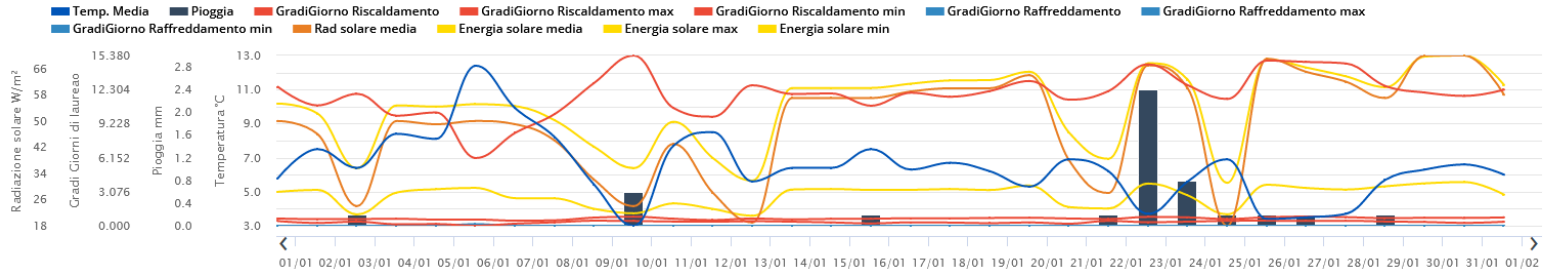


I bollettini Agrometeorologici vengono pubblicati con cadenza mensile sulla base delle informazioni raccolte in relazione a tre stazioni meteo installate nei pressi di Francavilla al Mare (CH), Vasto (CH) e Spaccarelli (CH).

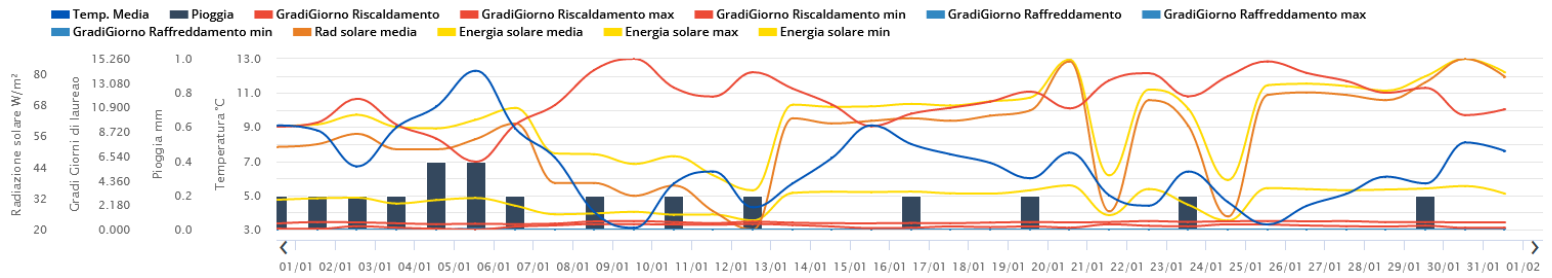
Per avere accesso ai dati in tempo reale scrivici a questo indirizzo: [info@poloagire.it](mailto:info@poloagire.it)



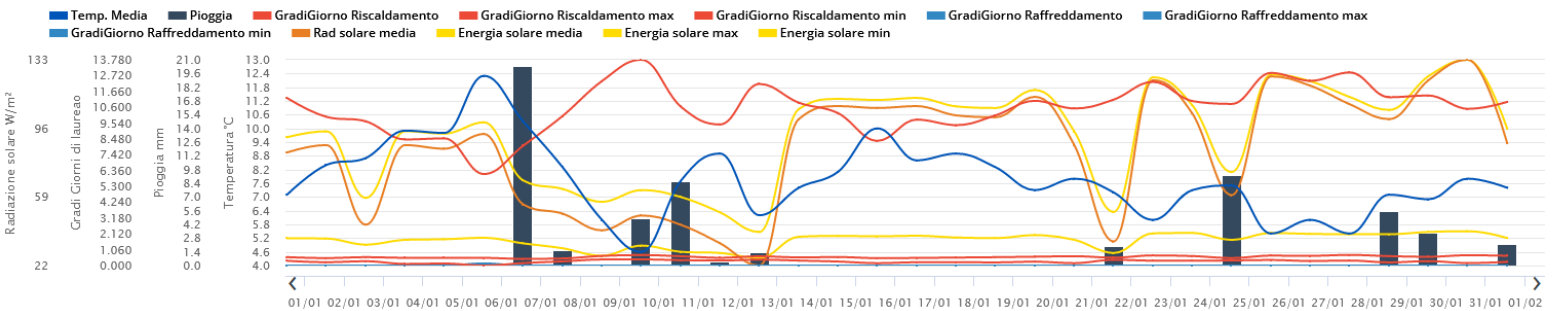
**Francavilla**



**Lanciano**



**Vasto**



JANUARY 2022

LOCAL CLIMATOLOGICAL DATA

DAVIS INSTRUMENTS, WEATHERLINK NETWORK

Francavilla al Mare, Abruzzo ITA

Francavilla Galasso

Lat: 42.4270 Long: 14.2602 Elev (ground): 54 m Time Zone: Europe/Rome



TEMPERATURE °C						DEG DAYS BASE 18.3°		PRECIP. (mm)	PRESSURE (hPa)		WIND SPEED = km/h DIR = DEGREES													
Date	MAXIMUM	MINIMUM	AVERAGE	AVERAGE DEW PT	AVERAGE WET BULB	HEATING	COOLING	WATER EQUIV	AVERAGE STATION	AVERAGE SEA LEVEL	RESULTANT SPEED	RES DIR	AVERAGE SPEED	WIND MAX				Date						
														INSTANT		ARCHIVE								
														SPEED	DIR	SPEED	DIR							
01	12.4	3.7	7.5	6.6	7.0	10.868	0.000	0.0	1020.7	1021.5	0.5	19	0.0	12.9	360	3.2	360	01						
02	9.5	3.2	6.4	6.1	6.2	11.917	0.000	0.2	1020.3	1021.1	0.6	247	0.0	8.0	225	3.2	225	02						
03	15.4	2.7	8.4	6.2	7.1	9.940	0.000	0.0	1015.6	1016.3	1.7	209	1.6	17.7	158	6.4	158	03						
04	14.7	4.8	8.1	6.2	7.0	10.234	0.000	0.0	1008.2	1009.0	0.1	87	0.0	12.9	112	3.2	68	04						
05	19.8	4.8	12.4	6.6	8.6	6.118	0.144	0.0	998.2	998.9	1.7	297	1.6	32.2	360	11.3	338	05						
06	14.3	7.3	9.9	5.2	7.2	8.396	0.000	0.0	1004.3	1005.1	6.2	0	6.4	43.5	338	12.9	338	06						
07	10.9	6.5	8.2	4.7	6.3	10.102	0.000	0.0	1011.9	1012.6	8.1	0	8.0	29.0	22	12.9	360	07						
08	7.6	0.6	5.4	0.7	3.0	12.917	0.000	0.0	1008.6	1009.3	4.7	359	4.8	25.7	22	11.3	22	08						
09	8.1	-1.3	3.0	0.3	1.7	15.375	0.000	0.6	999.1	999.8	1.9	326	1.6	29.0	360	11.3	360	09						
10	9.3	2.0	7.7	2.8	5.0	10.634	0.000	0.0	1000.0	1000.7	15.7	22	16.1	40.2	22	19.3	360	10						
11	9.8	5.9	8.5	3.3	5.6	9.852	0.000	0.0	1012.2	1012.9	15.2	14	14.5	43.5	360	22.5	360	11						
12	8.6	2.6	5.6	2.2	3.9	12.687	0.000	0.0	1021.3	1022.0	12.3	355	11.3	35.4	315	16.1	360	12						
13	9.8	4.4	6.4	0.0	3.1	11.903	0.000	0.0	1028.8	1029.6	9.6	353	9.7	32.2	22	14.5	338	13						
14	11.4	3.3	6.4	-0.6	2.7	11.951	0.000	0.0	1025.4	1026.1	1.8	339	1.6	16.1	338	6.4	360	14						
15	13.5	3.1	7.5	3.7	5.4	10.840	0.000	0.2	1019.7	1020.4	0.6	300	1.6	14.5	22	6.4	22	15						
16	11.1	2.0	6.3	4.9	5.5	12.016	0.000	0.0	1019.0	1019.7	0.3	209	0.0	11.3	90	4.8	68	16						
17	11.7	2.2	6.7	4.7	5.6	11.653	0.000	0.0	1020.6	1021.3	1.0	329	3.2	24.1	360	8.0	45	17						
18	12.8	0.7	6.2	2.7	4.3	12.169	0.000	0.0	1026.3	1027.0	0.8	273	1.6	16.1	22	6.4	45	18						
19	12.0	0.8	5.3	2.0	3.5	13.079	0.000	0.0	1025.3	1026.1	1.8	215	1.6	16.1	158	6.4	158	19						
20	15.1	1.1	6.9	3.7	5.2	11.384	0.000	0.0	1015.6	1016.4	1.7	342	1.6	29.0	360	14.5	360	20						
21	8.3	3.7	6.2	4.0	5.0	12.169	0.000	0.2	1017.1	1017.9	5.5	1	4.8	35.4	360	17.7	22	21						
22	10.9	-1.2	3.7	-1.2	1.2	14.586	0.000	2.4	1021.4	1022.2	1.2	248	1.6	14.5	360	4.8	225	22						
23	9.8	0.0	5.6	1.7	3.6	12.699	0.000	0.8	1024.2	1024.9	1.0	252	1.6	19.3	360	6.4	360	23						
24	8.0	3.4	6.9	2.5	4.6	11.449	0.000	0.2	1025.8	1026.5	4.8	11	6.4	30.6	360	14.5	360	24						
25	7.6	-0.4	3.4	-1.8	0.9	14.917	0.000	0.2	1027.4	1028.2	2.6	351	3.2	17.7	360	8.0	45	25						
26	8.2	-1.7	3.5	0.7	2.2	14.799	0.000	0.2	1023.4	1024.1	1.1	351	1.6	17.7	338	8.0	22	26						
27	7.8	-0.4	3.7	3.0	3.3	14.660	0.000	0.0	1021.6	1022.4	0.8	199	0.0	11.3	360	3.2	248	27						
28	9.2	1.6	5.7	4.4	5.1	12.616	0.000	0.2	1020.2	1020.9	4.0	2	4.8	30.6	45	14.5	360	28						
29	10.4	1.2	6.3	0.5	3.3	12.030	0.000	0.0	1023.9	1024.6	3.7	354	4.8	22.5	360	12.9	338	29						
30	12.3	1.2	6.6	-0.9	2.7	11.727	0.000	0.0	1014.8	1015.5	0.9	192	1.6	12.9	270	4.8	248	30						
31	10.1	0.2	6.0	2.8	4.4	12.287	0.000	0.0	1003.9	1004.7	3.8	12	4.8	51.5	22	24.1	22	31						
	11.0	2.2	6.5	2.8	4.5	21.366	0.258		1016.9	1017.7	3.7	202.12	4.7	< Monthly Avg										
NUMBER OF DAYS WITH:	>	Maximum Temp ≥ 32.2: 0	Minimum Temp ≤ 0: 6	Precipitation ≥ 0.2 mm: 3	Greatest 24 - hr precipitation: 2.8	Date: 22-23	Monthly Total Precipitation: 5.2																	
SEA LEVEL PRESSURE:	>	MAXIMUM: 1031.4	DATE: 13	TIME: 23:00	MONTHLY TOTAL: 662.350	SEASON TO DATE TOTAL: 2763.287	DEGREEE DAYS: >	HEATING: 5	COOLING: 21:00	0.258	0.258													

JANUARY 2022  
Francavilla al Mare, Abruzzo ITA

JANUARY 2022

LOCAL CLIMATOLOGICAL DATA

DAVIS INSTRUMENTS, WEATHERLINK NETWORK

, Abruzzo ITA  
Lanciano Eredi Legonziano



Lat: 42.2266 Long: 14.3454 Elev (ground): 237 m Time Zone: Europe/Rome

TEMPERATURE °C						DEG DAYS BASE 18.3°		PRECIP. (mm)	PRESSURE (hPa)		WIND SPEED = km/h DIR = DEGREES							
Date	MAXIMUM	MINIMUM	AVERAGE	AVERAGE DEW PT	AVERAGE WET BULB	HEATING	COOLING	WATER EQUIV	AVERAGE STATION	AVERAGE SEA LEVEL	RESULTANT SPEED	RES DIR	AVERAGE SPEED	WIND MAX				Date
														INSTANT		ARCHIVE		
														SPEED	DIR	SPEED	DIR	
01	17.2	2.2	8.8	6.1	7.1	9.567	0.000	0.2	1000.2	1000.9	0.8	171	0.0	11.3	225	3.2	180	01
02	11.9	2.7	6.7	5.2	5.9	11.683	0.000	0.2	999.8	1000.5	1.4	178	1.6	12.9	158	3.2	158	02
03	14.5	4.7	9.0	5.8	7.1	9.359	0.000	0.2	995.5	996.2	2.3	170	1.6	14.5	180	4.8	135	03
04	16.7	6.3	10.2	5.8	7.6	8.123	0.000	0.4	988.2	988.9	1.8	183	1.6	12.9	158	3.2	180	04
05	19.1	5.8	12.3	6.3	8.5	6.062	0.062	0.4	978.5	979.2	3.8	165	4.8	37.0	158	14.5	180	05
06	13.1	6.4	8.9	4.0	6.1	9.398	0.000	0.2	984.2	984.9	1.1	80	1.6	17.7	135	6.4	112	06
07	9.5	5.6	7.2	4.0	5.5	11.139	0.000	0.0	991.5	992.2	1.8	344	1.6	12.9	22	3.2	315	07
08	6.6	0.4	4.0	0.2	2.2	14.285	0.000	0.2	988.1	988.8	0.4	62	0.0	12.9	68	3.2	22	08
09	6.8	-0.2	3.1	-0.7	1.2	15.252	0.000	0.0	978.8	979.5	0.7	207	1.6	14.5	292	3.2	202	09
10	7.5	1.4	5.7	1.9	3.7	12.678	0.000	0.2	979.6	980.3	5.4	354	4.8	25.7	22	8.0	22	10
11	8.2	4.6	6.4	2.5	4.4	11.887	0.000	0.0	991.4	992.1	5.5	350	4.8	20.9	338	8.0	360	11
12	6.3	1.3	4.3	1.4	2.8	14.058	0.000	0.2	1000.6	1001.3	4.4	331	3.2	16.1	360	6.4	338	12
13	8.6	3.4	5.7	-1.1	2.3	12.593	0.000	0.0	1008.1	1008.8	3.4	347	3.2	19.3	22	6.4	22	13
14	12.1	4.7	7.2	-0.3	3.1	11.160	0.000	0.0	1004.8	1005.5	0.5	80	1.6	14.5	135	3.2	22	14
15	15.3	4.8	9.1	3.6	5.9	9.229	0.000	0.0	999.5	1000.2	1.6	138	1.6	12.9	22	4.8	158	15
16	14.7	3.7	8.0	3.8	5.6	10.347	0.000	0.2	998.7	999.4	2.5	169	1.6	14.5	112	4.8	135	16
17	11.7	4.2	7.4	4.5	5.8	10.887	0.000	0.0	1000.3	1001.0	0.6	154	1.6	14.5	45	4.8	202	17
18	13.3	3.3	6.9	1.8	4.2	11.437	0.000	0.0	1005.8	1006.6	1.6	150	1.6	9.7	22	4.8	158	18
19	11.9	2.2	6.0	0.7	3.2	12.331	0.000	0.2	1004.8	1005.6	2.0	167	1.6	17.7	135	6.4	135	19
20	14.4	2.8	7.5	1.4	4.1	10.826	0.000	0.0	995.5	996.2	1.3	189	1.6	14.5	270	4.8	202	20
21	7.1	2.1	5.0	3.0	4.0	13.329	0.000	0.0	996.5	997.2	0.9	8	0.0	20.9	45	4.8	360	21
22	10.5	-0.4	4.4	-4.1	0.1	13.968	0.000	0.0	1000.9	1001.7	2.0	173	1.6	11.3	270	4.8	202	22
23	11.4	1.0	6.4	0.7	3.4	11.896	0.000	0.2	1003.6	1004.3	0.6	153	0.0	11.3	270	3.2	135	23
24	7.3	0.2	4.6	1.7	3.2	13.701	0.000	0.0	1005.0	1005.7	1.1	25	1.6	19.3	68	3.2	22	24
25	7.8	-0.1	3.3	-3.5	0.0	15.028	0.000	0.0	1006.7	1007.4	0.2	144	1.6	12.9	22	3.2	135	25
26	9.8	0.3	4.4	0.3	2.4	13.981	0.000	0.0	1002.6	1003.4	1.3	153	1.6	12.9	22	3.2	180	26
27	11.4	0.3	5.1	2.8	3.9	13.264	0.000	0.0	1000.8	1001.6	2.1	156	1.6	12.9	158	4.8	135	27
28	12.8	2.1	6.1	3.9	4.9	12.215	0.000	0.0	999.6	1000.3	0.6	85	1.6	20.9	112	6.4	22	28
29	10.2	2.0	5.7	-1.7	1.9	12.653	0.000	0.2	1003.4	1004.1	1.1	44	1.6	30.6	68	4.8	68	29
30	15.1	1.9	8.1	-3.7	1.6	10.220	0.000	0.0	994.6	995.3	2.5	175	1.6	17.7	180	4.8	180	30
31	14.3	2.9	7.6	2.6	4.8	10.745	0.000	0.0	983.8	984.5	1.5	150	3.2	35.4	45	11.3	22	31
	11.5	2.7	6.6	1.9	4.1	21.095	0.112		996.5	997.2	1.8	169.45	2.1	< Monthly Avg				
NUMBER OF DAYS WITH:		>		Maximum Temp ≥ 32.2: 0		Minimum Temp ≤ 0: 3		Precipitation ≥ 0.2 mm: 2		Greatest 24 - hr precipitation: 0.4		Date: 3-4		Monthly Total Precipitation: 3.0				
SEA LEVEL PRESSURE:		>		MAXIMUM: 1010.7		DATE: 13		TIME: 22:00		DEGREEE DAYS: >		HEATING: 653.942		MONTHLY TOTAL: 2890.842		SEASON TO DATE TOTAL: 0.808		
				MINIMUM: 974.3		DATE: 5		TIME: 20:00				COOLING: 0.112						

JANUARY 2022  
, Abruzzo ITA

**JANUARY 2022**

**LOCAL CLIMATOLOGICAL DATA**

DAVIS INSTRUMENTS, WEATHERLINK NETWORK

**, Abruzzo ITA  
Vasto Del Borrello**



Lat: 42.1726 Long: 14.6826 Elev (ground): 39 m Time Zone: Europe/Rome

TEMPERATURE °C						DEG DAYS BASE 18.3°		PRECIP. (mm)	PRESSURE (hPa)		WIND SPEED = km/h DIR = DEGREES							
Date	MAXIMUM	MINIMUM	AVERAGE	AVERAGE DEW PT	AVERAGE WET BULB	HEATING	COOLING	WATER EQUIV	AVERAGE STATION	AVERAGE SEA LEVEL	RESULTANT SPEED	RES DIR	AVERAGE SPEED	WIND MAX				Date
														INSTANT		ARCHIVE		
														SPEED	DIR	SPEED	DIR	
01	13.3	6.0	8.4	7.1	7.7	9.958	0.000	0.2	1021.8	1022.6	1.1	270	1.6	14.5	45	4.8	270	01
02	11.4	4.3	8.7	7.5	8.0	9.660	0.000	0.0	1021.4	1022.1	1.4	252	1.6	12.9	90	4.8	68	02
03	15.7	5.8	9.9	6.6	8.0	8.442	0.000	0.0	1017.0	1017.7	3.5	220	3.2	16.1	180	6.4	248	03
04	15.1	5.5	9.8	6.7	8.0	8.516	0.000	0.0	1009.4	1010.2	1.1	242	1.6	11.3	248	4.8	248	04
05	20.3	5.7	12.3	7.5	9.2	6.127	0.144	0.0	999.9	1000.6	7.7	226	8.0	46.7	248	20.9	248	05
06	15.2	7.6	10.3	5.8	7.6	8.030	0.000	20.4	1005.1	1005.8	1.3	316	3.2	29.0	248	8.0	225	06
07	11.7	6.9	8.3	5.9	7.0	10.016	0.000	1.6	1012.7	1013.4	3.8	324	3.2	20.9	315	4.8	315	07
08	9.0	2.7	6.0	2.2	4.0	12.354	0.000	0.0	1009.3	1010.0	3.6	314	3.2	19.3	270	4.8	315	08
09	8.7	1.3	4.6	1.6	3.1	13.780	0.000	4.8	999.9	1000.7	2.3	268	3.2	24.1	360	6.4	270	09
10	9.8	2.8	7.7	3.9	5.6	10.646	0.000	8.6	999.8	1000.6	6.9	3	6.4	38.6	338	14.5	45	10
11	10.3	5.8	8.9	4.7	6.6	9.447	0.000	0.4	1011.9	1012.7	8.5	25	9.7	38.6	68	16.1	45	11
12	8.9	3.4	6.2	3.0	4.5	12.162	0.000	1.4	1021.5	1022.2	5.7	335	4.8	30.6	45	9.7	45	12
13	10.8	5.1	7.4	1.7	4.4	10.907	0.000	0.0	1029.3	1030.0	5.6	334	4.8	30.6	338	8.0	338	13
14	12.1	4.5	8.1	0.6	4.0	10.206	0.000	0.0	1026.2	1027.0	3.6	314	3.2	19.3	315	4.8	315	14
15	14.4	6.3	10.0	5.1	7.2	8.354	0.000	0.0	1020.6	1021.3	2.4	296	1.6	12.9	315	4.8	315	15
16	13.5	5.9	8.6	5.3	6.8	9.775	0.000	0.0	1020.0	1020.8	1.9	239	3.2	12.9	248	4.8	248	16
17	13.4	5.2	8.9	5.9	7.2	9.403	0.000	0.0	1021.6	1022.4	2.7	298	3.2	17.7	270	4.8	315	17
18	13.5	4.1	8.3	3.3	5.5	10.058	0.000	0.0	1027.3	1028.0	2.5	267	1.6	14.5	90	4.8	248	18
19	12.6	3.7	7.3	2.4	4.7	11.032	0.000	0.0	1026.5	1027.3	2.1	226	3.2	14.5	270	6.4	270	19
20	15.6	2.7	7.8	3.6	5.5	10.519	0.000	0.0	1016.7	1017.5	1.9	246	1.6	16.1	338	4.8	225	20
21	9.2	5.4	7.2	3.3	5.2	11.109	0.000	2.0	1017.8	1018.5	4.0	22	4.8	27.4	45	12.9	68	21
22	11.1	1.7	6.0	-2.6	1.5	12.301	0.000	0.0	1022.5	1023.2	1.0	300	3.2	27.4	90	9.7	68	22
23	11.2	3.1	7.3	1.4	4.1	11.014	0.000	0.0	1025.2	1025.9	1.2	250	3.2	16.1	135	6.4	248	23
24	10.2	6.0	7.5	1.4	4.3	10.822	0.000	9.2	1026.4	1027.1	8.8	58	9.7	41.8	68	19.3	68	24
25	9.4	2.3	5.4	-1.4	2.0	12.903	0.000	0.0	1028.3	1029.0	2.8	320	3.2	22.5	68	8.0	90	25
26	11.1	1.4	6.0	2.3	4.1	12.368	0.000	0.0	1024.4	1025.1	2.3	270	1.6	11.3	248	4.8	270	26
27	10.3	0.7	5.4	3.8	4.6	12.933	0.000	0.0	1022.7	1023.4	0.9	233	1.6	16.1	248	6.4	248	27
28	13.6	3.0	7.1	4.9	5.9	11.271	0.000	5.6	1021.0	1021.8	2.0	289	3.2	33.8	338	6.4	112	28
29	11.4	4.1	6.9	0.9	3.7	11.387	0.000	3.4	1024.9	1025.6	2.7	344	4.8	37.0	68	16.1	45	29
30	14.4	1.7	7.8	-1.0	3.0	10.493	0.000	0.0	1016.1	1016.8	3.1	226	4.8	17.7	248	8.0	248	30
31	12.7	2.3	7.4	4.0	5.6	10.956	0.000	2.2	1004.9	1005.6	2.1	305	3.2	48.3	68	14.5	338	31
	12.3	4.1	7.8	3.5	5.4	18.984	0.258		1017.8	1018.5	3.2	246.22	3.7	< Monthly Avg				
NUMBER OF DAYS WITH: >		Maximum Temp ≥ 32.2: 0 Maximum Temp ≤ 0: 0			Minimum Temp ≤ 0: 0 Minimum Temp ≤ -17.7: 0			Precipitation ≥ 0.2 mm: 11 Precipitation ≥ 2.0 mm: 6			Greatest 24 - hr precipitation: 21.0 Date: 6-7 Monthly Total Precipitation: 59.8							
SEA LEVEL PRESSURE: >		MAXIMUM: 1032.2 MINIMUM: 996.0		DATE 13	TIME 23:00	DEGREEE DAYS: >		HEATING: 588.508 COOLING: 0.258		MONTHLY TOTAL 2501.408		SEASON TO DATE TOTAL 0.567						

**JANUARY 2022  
, Abruzzo ITA**



# AGROFENOLOGIA

## (VITE)

Nel corso del mese di gennaio le aree oggetto di osservazione hanno presentato forti escursioni termiche, alcuni importanti eventi piovosi e temperature medie distanti rispetto ai valori registrati nell'anno passato.

Le viti permangono nella fase di riposo vegetativo.

### OPERAZIONI AGRONOMICHE E INTERVENTI FITOSANITARI SUGGERITI

Nel mese di gennaio proseguono le operazioni di potatura. La potatura secca, attraverso la riduzione del numero di grappoli, consente di ottenere dei benefici in termini di migliore qualità delle uve, grappoli di dimensioni maggiori, maggiore costanza della produzione, più rapida messa a frutto. La potatura secca, inoltre, consente di preservare la longevità dell'impianto mantenendo la pianta produttiva per molti anni.

La potatura secca rappresenta, inoltre, un'efficace azione di prevenzione contro lo sviluppo di malattie della pianta. Per minimizzare il rischio di infezioni, si segnalano alcune buone pratiche agricole:

- posticipare la potatura delle piante segnate durante i mesi precedenti;
- non potare in prossimità di giornate di pioggia;
- tracciare le piante che hanno manifestato segni di fitopatie, in modo da avere un quadro chiaro delle modalità e della diffusione delle malattie.

Per determinare l'intensità della potatura si raccomanda di preservare un buon equilibrio vegeto-produttivo.



Agire Soc. Cons. a r.l.  
P.Iva 01776590679  
Via Isidoro e Lepido Facii snc - 64100 Sant'Atto - Teramo  
info@poloagire.it; - Tel.: +39 0861 232435  
[www.poloagire.it](http://www.poloagire.it)