



BOLLETTINO AGROMETEOROLOGICO

Febbraio 2022



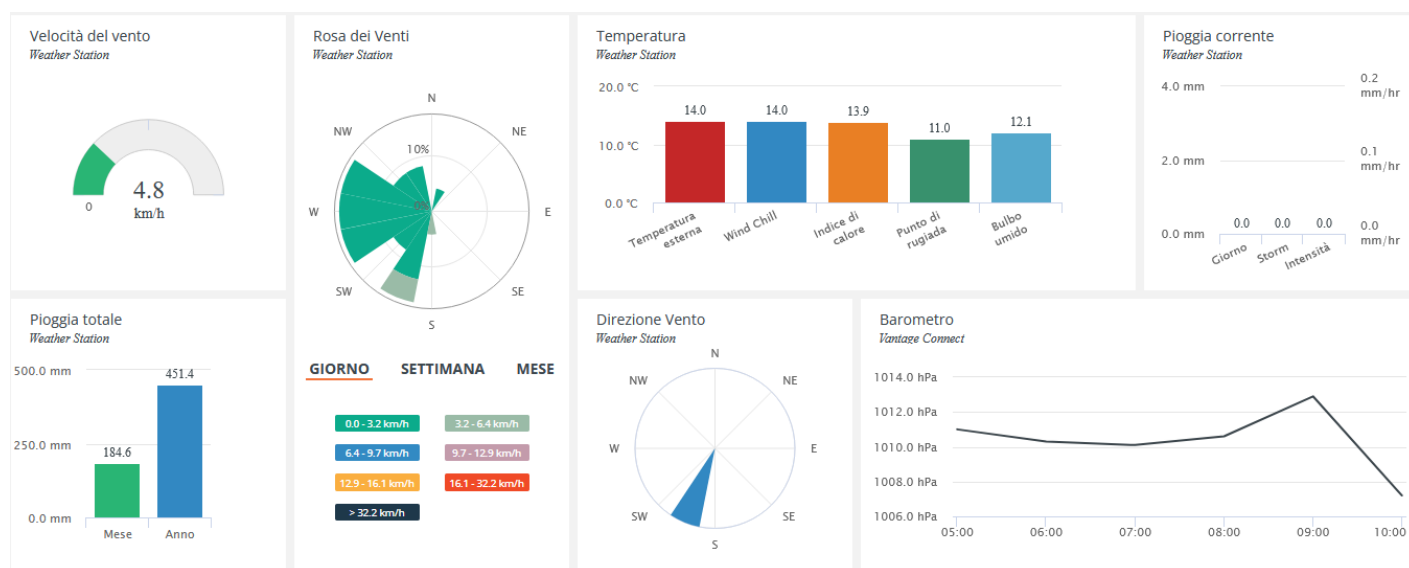
Fondo europeo agricolo per lo sviluppo rurale:
l'Europa investe nelle zone rurali



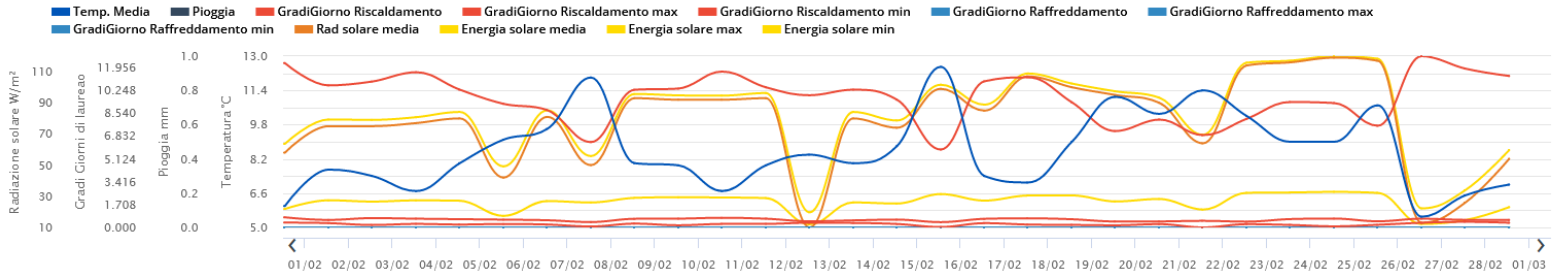


I bollettini Agrometeorologici vengono pubblicati con cadenza mensile sulla base delle informazioni raccolte in relazione a tre stazioni meteo installate nei pressi di Francavilla al Mare (CH), Vasto (CH) e Spaccarelli (CH).

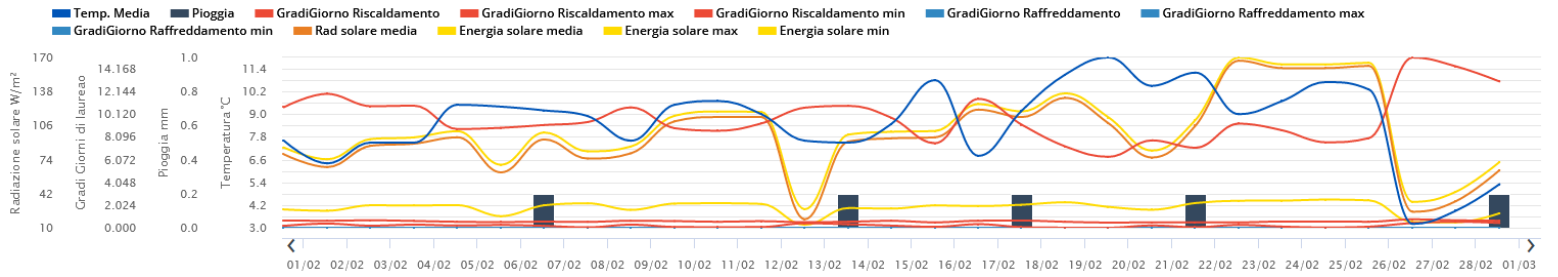
Per avere accesso ai dati in tempo reale scrivici a questo indirizzo: info@poloagire.it



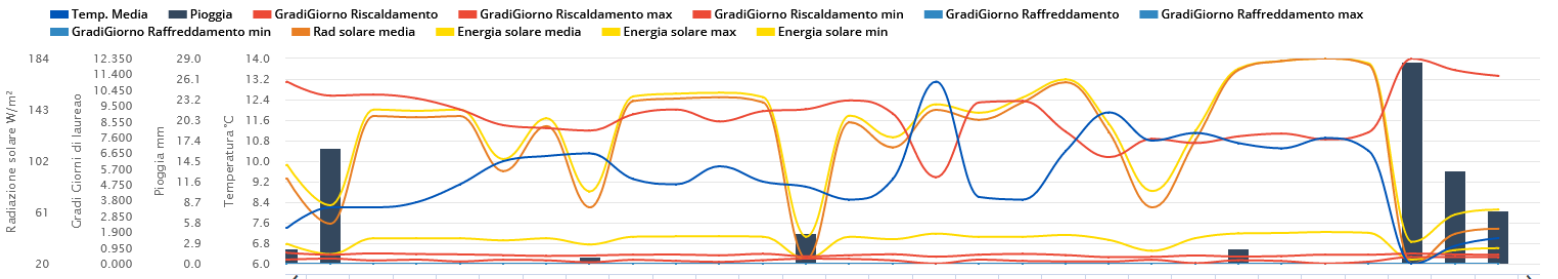
Francavilla



Lanciano



Vasto



FEBRUARY 2022

LOCAL CLIMATOLOGICAL DATA

DAVIS INSTRUMENTS, WEATHERLINK NETWORK

Francavilla al Mare, Abruzzo ITA

Francavilla Galasso

Lat: 42.4270 Long: 14.2602 Elev (ground): 54 m Time Zone: Europe/Rome



TEMPERATURE °C						DEG DAYS BASE 18.3°		PRECIP. (mm)	PRESSURE (hPa)		WIND SPEED = km/h DIR = DEGREES								
Date	MAXIMUM	MINIMUM	AVERAGE	AVERAGE DEW PT	AVERAGE WET BULB	HEATING	COOLING	WATER EQUIV	AVERAGE STATION	AVERAGE SEA LEVEL	RESULTANT SPEED	RES DIR	AVERAGE SPEED	WIND MAX				Date	
														INSTANT		ARCHIVE			
														SPEED	DIR	SPEED	DIR		
01	10.7	4.7	7.7	2.5	4.9	10.620	0.000	0.0	1005.3	1006.0	14.9	12	14.5	46.7	360	22.5	360	01	
02	14.1	1.3	7.4	0.3	3.5	10.910	0.000	0.0	1007.6	1008.3	2.5	347	3.2	19.3	360	9.7	22	02	
03	12.1	2.2	6.7	2.0	4.2	11.606	0.000	0.0	1017.8	1018.6	3.2	202	3.2	27.4	158	11.3	180	03	
04	13.2	2.6	8.0	4.7	6.2	10.301	0.000	0.0	1013.4	1014.1	2.4	23	1.6	29.0	360	16.1	22	04	
05	12.6	4.1	9.1	6.6	7.7	9.241	0.000	0.0	1014.4	1015.1	3.6	2	3.2	22.5	22	11.3	360	05	
06	13.2	5.4	9.6	7.3	8.2	8.775	0.000	0.0	1016.0	1016.7	1.4	168	3.2	19.3	270	8.0	158	06	
07	17.1	8.7	12.0	3.4	6.8	6.382	0.000	0.0	1009.2	1009.9	9.1	358	9.7	54.7	360	25.7	22	07	
08	11.7	2.7	8.0	-0.8	3.2	10.296	0.000	0.0	1024.8	1025.5	5.6	0	6.4	33.8	360	17.7	360	08	
09	14.9	2.6	7.9	-0.5	3.4	10.384	0.000	0.0	1025.9	1026.7	0.4	304	1.6	14.5	22	6.4	68	09	
10	12.3	0.8	6.7	2.9	4.7	11.653	0.000	0.0	1022.3	1023.1	0.2	107	1.6	11.3	248	4.8	248	10	
11	12.2	2.2	7.9	6.4	7.1	10.479	0.000	0.0	1018.8	1019.5	0.9	30	1.6	14.5	90	6.4	68	11	
12	10.2	7.3	8.4	6.9	7.6	9.884	0.000	0.0	1022.5	1023.2	5.4	351	4.8	25.7	338	14.5	360	12	
13	10.4	5.7	8.0	5.4	6.6	10.301	0.000	0.0	1021.3	1022.0	2.1	36	1.6	16.1	45	8.0	45	13	
14	12.1	4.3	8.8	6.1	7.2	9.549	0.000	0.0	1013.9	1014.6	1.7	188	1.6	16.1	158	6.4	158	14	
15	17.6	8.8	12.5	5.6	8.3	5.824	0.000	0.0	1008.6	1009.3	3.9	326	4.8	33.8	338	14.5	360	15	
16	10.8	2.8	7.4	5.6	6.4	10.928	0.000	0.0	1011.7	1012.4	2.4	23	3.2	17.7	22	8.0	360	16	
17	13.2	1.6	7.1	4.5	5.7	11.220	0.000	0.0	1008.4	1009.2	1.0	181	1.6	14.5	135	6.4	135	17	
18	13.9	2.4	9.0	6.9	7.7	9.354	0.000	0.0	1010.9	1011.6	1.5	179	1.6	19.3	158	8.0	158	18	
19	15.0	6.9	11.1	9.1	9.9	7.204	0.000	0.0	1011.4	1012.1	0.6	193	1.6	16.1	338	4.8	158	19	
20	12.6	7.6	10.3	9.1	9.6	8.065	0.000	0.0	1013.6	1014.3	2.3	34	1.6	25.7	22	11.3	22	20	
21	18.6	6.1	11.4	7.4	8.9	6.903	0.000	0.0	1003.5	1004.2	3.2	340	4.8	32.2	22	14.5	360	21	
22	12.8	7.8	10.2	3.8	6.5	8.125	0.000	0.0	1008.7	1009.5	17.8	9	17.7	49.9	338	24.1	22	22	
23	14.0	3.2	9.0	2.3	5.2	9.380	0.000	0.0	1019.8	1020.5	2.6	355	3.2	25.7	338	12.9	360	23	
24	16.4	2.2	9.0	1.1	4.5	9.299	0.000	0.0	1018.2	1018.9	2.3	190	1.6	20.9	135	9.7	158	24	
25	13.9	6.9	10.7	5.8	7.9	7.604	0.000	0.0	1012.9	1013.6	1.3	146	1.6	17.7	158	6.4	135	25	
26	10.3	2.5	5.5	3.8	4.7	12.808	0.000	0.0	1012.2	1012.9	18.5	21	19.3	66.0	22	35.4	22	26	
27	8.4	4.7	6.5	3.2	4.8	11.873	0.000	0.0	1015.2	1015.9	12.4	8	12.9	35.4	90	17.7	360	27	
28	10.1	4.7	7.0	2.5	4.7	11.326	0.000	0.0	1019.5	1020.2	11.0	5	11.3	33.8	45	16.1	360	28	
	13.0	4.4	8.7	4.4	6.3	17.376	0.000		1014.6	1015.3	4.8	147.80	5.2	< Monthly Avg					
NUMBER OF DAYS WITH: >						Maximum Temp ≥ 32.2: 0		Minimum Temp ≤ 0: 0		Precipitation ≥ 0.2 mm: 0			Greatest 24 - hr precipitation: Date:						
						Maximum Temp ≤ 0: 0		Minimum Temp ≤ -17.7: 0		Precipitation ≥ 2.0 mm: 0			Monthly Total Precipitation: 0.0						
SEA LEVEL PRESSURE: >						MAXIMUM: 1027.6		DATE: 8		TIME: 21:00		DEGREEE DAYS: >		MONTHLY TOTAL: 486.529		HEATING: 2763.287		SEASON TO DATE TOTAL: 0.258	
						MINIMUM: 999.2		DATE: 21		TIME: 20:00				COOLING: 0.000					

FEBRUARY 2022
Francavilla al Mare, Abruzzo ITA

FEBRUARY 2022

LOCAL CLIMATOLOGICAL DATA

DAVIS INSTRUMENTS, WEATHERLINK NETWORK

, Abruzzo ITA
Lanciano Eredi Legonziano



Lat: 42.2266 Long: 14.3454 Elev (ground): 237 m Time Zone: Europe/Rome

TEMPERATURE °C						DEG DAYS BASE 18.3°		PRECIP. (mm)	PRESSURE (hPa)		WIND SPEED = km/h DIR = DEGREES						Date												
Date	MAXIMUM	MINIMUM	AVERAGE	AVERAGE DEW PT	AVERAGE WET BULB	HEATING	COOLING	WATER EQUIV	AVERAGE STATION	AVERAGE SEA LEVEL	RESULTANT SPEED	RES DIR	AVERAGE SPEED	WIND MAX															
														INSTANT		ARCHIVE													
														SPEED	DIR	SPEED		DIR											
01	9.8	3.2	6.4	1.7	3.9	11.942	0.000	0.0	984.8	985.6	6.1	352	6.4	38.6	45	12.9	360	01											
02	14.1	1.9	7.5	-0.7	2.9	10.833	0.000	0.0	987.4	988.1	1.4	93	3.2	17.7	68	6.4	22	02											
03	11.8	3.6	7.5	1.8	4.4	10.882	0.000	0.0	997.5	998.2	3.1	159	3.2	19.3	158	6.4	180	03											
04	13.7	5.5	9.5	3.0	5.8	8.796	0.000	0.0	993.0	993.7	1.3	175	1.6	14.5	45	4.8	202	04											
05	12.6	5.6	9.4	5.6	7.2	8.910	0.000	0.0	994.1	994.8	0.3	156	1.6	9.7	202	4.8	202	05											
06	14.6	4.9	9.2	6.8	7.8	9.160	0.000	0.2	995.7	996.5	2.2	161	1.6	14.5	135	6.4	135	06											
07	17.8	5.3	8.9	2.5	5.2	9.424	0.000	0.0	989.0	989.7	1.5	334	3.2	37.0	22	9.7	22	07											
08	11.7	2.8	7.6	-2.0	2.4	10.729	0.000	0.0	1004.3	1005.0	1.7	1	3.2	16.1	22	4.8	338	08											
09	16.6	3.9	9.5	-1.1	3.4	8.873	0.000	0.0	1005.4	1006.1	1.3	163	1.6	12.9	68	4.8	180	09											
10	17.1	4.4	9.7	1.4	4.9	8.644	0.000	0.0	1001.9	1002.6	2.0	158	1.6	16.1	135	6.4	135	10											
11	16.9	4.2	9.0	4.6	6.5	9.301	0.000	0.0	998.4	999.1	1.1	130	1.6	16.1	158	3.2	158	11											
12	8.9	6.4	7.6	6.0	6.8	10.706	0.000	0.0	1002.0	1002.7	1.2	326	0.0	14.5	315	4.8	338	12											
13	10.8	5.3	7.5	4.4	5.8	10.868	0.000	0.2	1000.7	1001.4	1.2	50	0.0	12.9	22	3.2	22	13											
14	13.9	3.5	8.5	5.6	6.8	9.792	0.000	0.0	993.7	994.5	1.6	158	1.6	11.3	112	3.2	135	14											
15	16.5	6.8	10.8	5.1	7.4	7.539	0.000	0.0	988.7	989.4	2.4	148	3.2	20.9	180	6.4	180	15											
16	11.4	2.8	6.8	3.9	5.3	11.486	0.000	0.0	991.3	992.0	1.1	98	1.6	14.5	22	4.8	22	16											
17	17.1	3.1	9.2	2.0	4.9	9.178	0.000	0.2	988.3	989.1	1.4	181	1.6	12.9	68	3.2	180	17											
18	18.6	5.6	11.1	5.4	7.6	7.248	0.000	0.0	990.6	991.3	2.3	159	1.6	14.5	112	6.4	135	18											
19	18.8	6.6	12.0	8.7	9.9	6.324	0.000	0.0	991.4	992.1	1.5	171	1.6	19.3	158	4.8	202	19											
20	13.7	6.8	10.5	8.7	9.4	7.789	0.000	0.0	993.2	993.9	0.5	109	0.0	16.1	45	4.8	22	20											
21	17.8	6.4	11.2	6.1	8.1	7.130	0.000	0.2	983.6	984.3	1.3	138	1.6	33.8	90	6.4	22	21											
22	12.3	6.4	9.0	2.1	5.1	9.285	0.000	0.0	988.3	989.0	7.2	359	6.4	33.8	22	11.3	360	22											
23	15.9	3.6	9.7	-0.9	3.5	8.683	0.000	0.0	999.3	1000.0	1.3	52	3.2	16.1	68	4.8	22	23											
24	18.3	4.6	10.7	-1.3	3.5	7.616	0.000	0.0	998.0	998.7	2.7	164	1.6	16.1	158	4.8	180	24											
25	16.2	5.1	10.3	2.6	5.7	7.998	0.000	0.0	992.7	993.4	2.4	152	1.6	17.7	135	4.8	180	25											
26	8.3	0.3	3.2	1.9	2.6	15.174	0.000	0.0	991.4	992.1	3.8	337	3.2	24.1	360	9.7	338	26											
27	5.4	2.3	3.9	1.8	2.9	14.384	0.000	0.0	994.6	995.3	3.9	324	3.2	16.1	338	6.4	315	27											
28	8.6	3.3	5.3	2.0	3.6	13.044	0.000	0.2	998.7	999.4	3.1	345	3.2	17.7	22	4.8	315	28											
													13.9	4.4	8.6	3.1	5.5	17.469	0.000		994.2	994.9	2.2	184.01	2.6	< Monthly Avg			
NUMBER OF DAYS WITH: >						Maximum Temp ≥ 32.2: 0 Minimum Temp ≤ 0: 0			Minimum Temp ≤ -17.7: 0			Precipitation ≥ 0.2 mm: 0 Precipitation ≥ 2.0 mm: 0			Greatest 24 - hr precipitation: 0.2 Date: 5-6 Monthly Total Precipitation: 1.0														
SEA LEVEL PRESSURE: >						MAXIMUM: 1007.6 MINIMUM: 978.9		DATE 8 09:00 21 21:00		DEGREEE DAYS: >			MONTHLY TOTAL 489.125 COOLING: 0.000		SEASON TO DATE TOTAL 2890.842 0.808														

FEBRUARY 2022
, Abruzzo ITA

FEBRUARY 2022

LOCAL CLIMATOLOGICAL DATA

DAVIS INSTRUMENTS, WEATHERLINK NETWORK

**, Abruzzo ITA
Vasto Del Borrello**



Lat: 42.1726 Long: 14.6826 Elev (ground): 39 m Time Zone: Europe/Rome

TEMPERATURE °C						DEG DAYS BASE 18.3°		PRECIP. (mm)	PRESSURE (hPa)		WIND SPEED = km/h DIR = DEGREES							
Date	MAXIMUM	MINIMUM	AVERAGE	AVERAGE DEW PT	AVERAGE WET BULB	HEATING	COOLING	WATER EQUIV	AVERAGE STATION	AVERAGE SEA LEVEL	RESULTANT SPEED	RES DIR	AVERAGE SPEED	WIND MAX				Date
														INSTANT		ARCHIVE		
														SPEED	DIR	SPEED	DIR	
01	11.1	5.0	8.2	3.6	5.7	10.116	0.000	16.4	1005.1	1005.9	9.6	15	11.3	45.1	45	20.9	45	01
02	13.7	3.3	8.2	1.8	4.7	10.181	0.000	0.0	1008.6	1009.3	2.3	290	3.2	16.1	248	6.4	248	02
03	12.6	4.1	8.4	2.8	5.3	9.949	0.000	0.0	1019.1	1019.8	2.9	195	3.2	22.5	158	9.7	158	03
04	15.1	4.3	9.1	4.8	6.7	9.282	0.000	0.0	1014.4	1015.1	1.4	285	1.6	19.3	338	4.8	338	04
05	13.4	5.4	10.0	7.1	8.3	8.336	0.000	0.0	1015.2	1016.0	2.0	303	1.6	14.5	360	4.8	248	05
06	13.5	6.8	10.2	8.3	9.1	8.162	0.000	0.0	1017.1	1017.8	1.0	176	3.2	17.7	112	8.0	135	06
07	16.2	6.1	10.3	4.1	6.7	8.014	0.000	1.0	1009.8	1010.6	4.2	22	6.4	54.7	68	19.3	45	07
08	13.1	4.9	9.3	0.9	4.6	8.991	0.000	0.0	1025.6	1026.3	5.1	30	8.0	40.2	45	19.3	45	08
09	14.5	4.2	9.1	1.7	5.0	9.280	0.000	0.0	1027.0	1027.8	1.9	266	3.2	12.9	248	4.8	248	09
10	15.8	5.9	9.8	3.8	6.4	8.558	0.000	0.0	1023.4	1024.2	2.9	205	3.2	17.7	158	8.0	135	10
11	13.6	3.9	9.2	6.0	7.4	9.181	0.000	0.0	1019.8	1020.5	0.8	271	3.2	14.5	112	6.4	90	11
12	11.5	7.7	9.0	7.2	8.0	9.299	0.000	4.4	1023.1	1023.8	3.8	321	3.2	19.3	292	4.8	338	12
13	11.8	5.9	8.5	5.4	6.8	9.829	0.000	0.0	1022.3	1023.0	1.0	327	1.6	14.5	45	6.4	45	13
14	13.6	4.6	9.3	6.8	7.8	9.037	0.000	0.0	1015.1	1015.8	1.3	238	1.6	24.1	225	11.3	248	14
15	18.9	7.8	13.1	6.1	8.8	5.208	0.000	0.0	1009.8	1010.6	9.2	231	9.7	45.1	248	20.9	225	15
16	12.6	5.2	8.6	6.1	7.2	9.711	0.000	0.0	1012.6	1013.4	2.5	308	1.6	17.7	338	4.8	338	16
17	15.1	4.1	8.5	5.0	6.5	9.789	0.000	0.0	1009.6	1010.4	2.6	212	3.2	19.3	180	9.7	158	17
18	15.3	5.4	10.4	6.9	8.4	7.940	0.000	0.0	1011.9	1012.6	3.5	187	4.8	25.7	158	11.3	158	18
19	15.5	7.9	11.9	9.4	10.4	6.417	0.000	0.0	1012.4	1013.1	0.6	196	3.2	16.1	248	8.0	135	19
20	13.3	7.6	10.8	9.5	10.0	7.516	0.000	0.0	1014.6	1015.3	1.3	315	1.6	20.9	22	6.4	338	20
21	17.9	6.3	11.1	7.7	9.0	7.262	0.000	0.0	1004.6	1005.4	0.8	263	3.2	27.4	360	8.0	158	21
22	13.6	7.8	10.7	6.6	8.3	7.671	0.000	2.2	1008.6	1009.3	8.9	356	9.7	41.8	360	16.1	45	22
23	14.7	7.1	10.5	3.6	6.6	7.833	0.000	0.0	1020.6	1021.3	3.5	327	3.2	22.5	338	4.8	360	23
24	18.1	5.0	10.9	1.8	5.5	7.479	0.000	0.0	1019.4	1020.1	4.9	194	6.4	25.7	180	11.3	135	24
25	16.1	5.3	10.4	5.1	7.4	7.914	0.000	0.0	1014.0	1014.7	1.6	165	3.2	20.9	90	9.7	112	25
26	9.0	3.6	6.0	4.1	5.0	12.347	0.000	28.6	1011.3	1012.1	6.3	354	11.3	49.9	90	25.7	68	26
27	8.6	4.8	6.7	4.1	5.3	11.646	0.000	13.2	1015.2	1015.9	6.8	3	8.0	38.6	68	17.7	45	27
28	9.8	5.3	7.0	3.3	5.1	11.306	0.000	7.6	1019.8	1020.5	5.0	352	4.8	32.2	22	11.3	22	28
	13.9	5.6	9.5	5.1	7.0	15.959	0.000		1015.4	1016.1	3.5	228.70	4.6	< Monthly Avg				
NUMBER OF DAYS WITH: >						Maximum Temp ≥ 32.2: 0 Minimum Temp ≤ 0: 0		Minimum Temp ≤ -17.7: 0		Precipitation ≥ 0.2 mm: 7 Precipitation ≥ 2.0 mm: 5			Greatest 24 – hr precipitation: 31.6 Date: 26-27 Monthly Total Precipitation: 73.4					
SEA LEVEL PRESSURE: >						MAXIMUM: 1028.7 MINIMUM: 999.5		DATE 9 11:00 21 20:00		DEGREEE DAYS: >			MONTHLY TOTAL 446.854 COOLING: 0.000		SEASON TO DATE TOTAL 2501.408 0.567			

**FEBRUARY 2022
, Abruzzo ITA**



AGROFENOLOGIA

(VITE)

Il mese di febbraio ha registrato alcuni eventi piovosi molto consistenti, soprattutto nell'area di Vasto. Le temperature medie, come nel mese precedente, si sono discostate dai valori stagionali storici.

Le piante permangono nella fase di riposo vegetativo.

OPERAZIONI AGRONOMICHE E INTERVENTI FITOSANITARI SUGGERITI

Continuano le operazioni di potatura secca della vite. Si rimanda ai bollettini precedenti per suggerimenti e tecniche da utilizzare. Dal punto di vista fitosanitario il periodo in esame non presenta criticità particolari. Considerata l'espansione della problematica del Mal d'esca si suggerisce di evitare l'interramento dei sarmenti in presenza di piante malate.

Tra le operazioni eseguibili in campo in questo periodo vi è la sistemazione della struttura fissa del vigneto (pali di testata, pali di sostegno, supporti delle piante, etc.). Si suggerisce anche di valutare la semina di graminacee per contenere il ruscellamento delle acque piovane e favorirne l'assorbimento.



Agire Soc. Cons. a r.l.
P.Iva 01776590679
Via Isidoro e Lepido Facii snc - 64100 Sant'Atto - Teramo
info@poloagire.it; - Tel.: +39 0861 232435
www.poloagire.it